

WAAS CH <b>45538</b> <b>W23A</b>	APP CRS <b>229°</b>	Rwy Idg TDZE <b>88</b> Apt Elev <b>90</b>
--	------------------------	---

# RNAV (GPS) RWY 23

ZEPHYRHILLS MUNI (ZPH)

**⚠** Baro-VNAV and VDP NA when using Tampa Executive altimeter setting. For uncompensated Baro-VNAV systems, LNAV/VNAV NA below -15°C (5°F) or above 54°C (130°F). DME/DME RNP-0.3 NA. Helicopter visibility reduction below 1 SM NA. When local altimeter setting not received, use Tampa Executive altimeter setting and increase all DA 48 feet and all MDA 60 feet. Increase LPV and LNAV/VNAV all Cats, LNAV and Circling Cat C/D visibility ¼ mile.

**MISSED APPROACH:**  
Climb to 2000 direct BRUNT and hold.

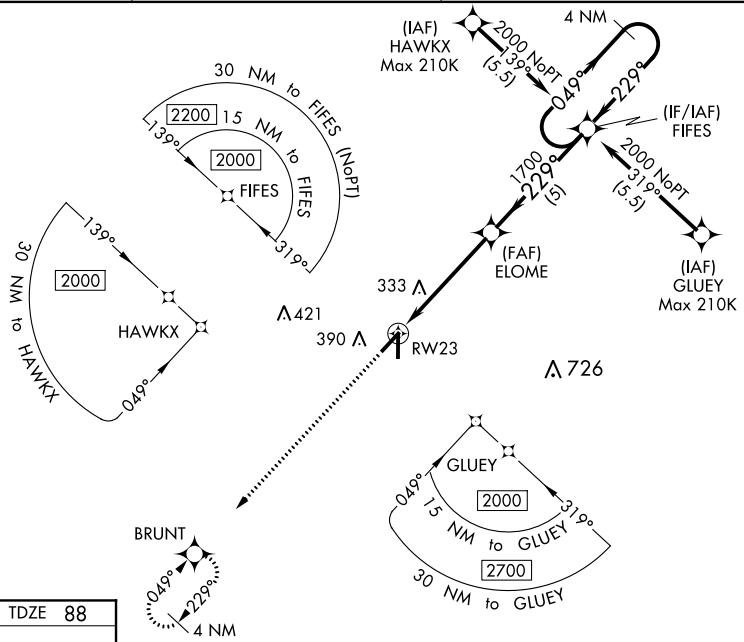
AWOS-3PT  
**118.975**

TAMPA APP CON  
**119.9 290.3**

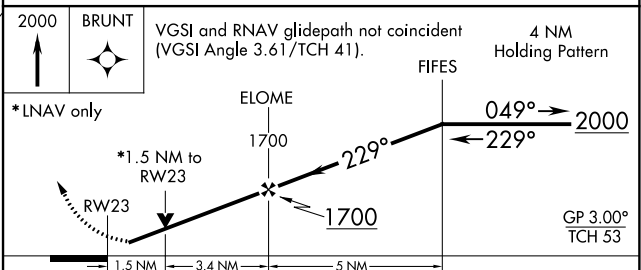
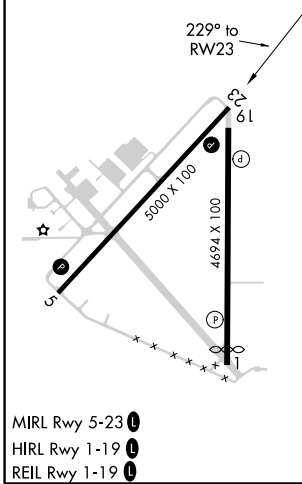
UNICOM  
**123.075 (CTAF)**

SE-3, 10 OCT 2019 to 07 NOV 2019

SE-3, 10 OCT 2019 to 07 NOV 2019



ELEV <b>90</b>	<b>D</b>	TDZE <b>88</b>
----------------	----------	----------------



CATEGORY	A	B	C	D
LPV DA		377-1	289 (300-1)	
LNAV/VNAV DA		409-1	321 (400-1)	
LNAV MDA	600-1	512 (600-1)	600-1 $\frac{3}{8}$	512 (600-1 $\frac{3}{8}$ )
<b>C</b> CIRCLING	740-1	650 (700-1)	740-1 $\frac{3}{4}$ 650 (700-1 $\frac{3}{4}$ )	740-2 650 (700-2)