

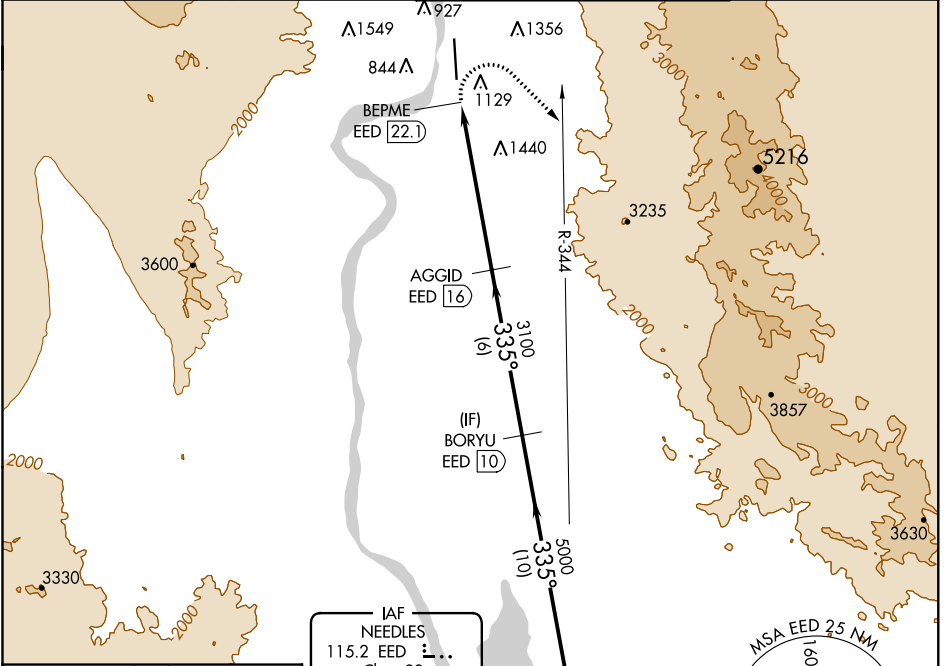
VORTAC EED <b>115.2</b> Chan <b>99</b>	APP CRS <b>335°</b>	Rwy Idg <b>8500</b> TDZE <b>707</b> Apt Elev <b>707</b>
--	------------------------	---

# VOR RWY 34

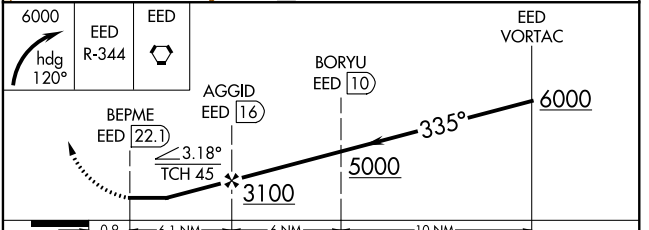
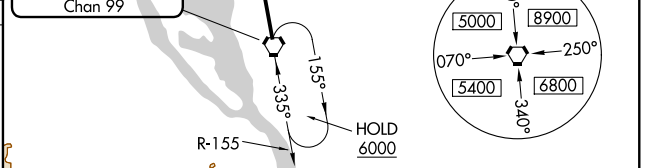
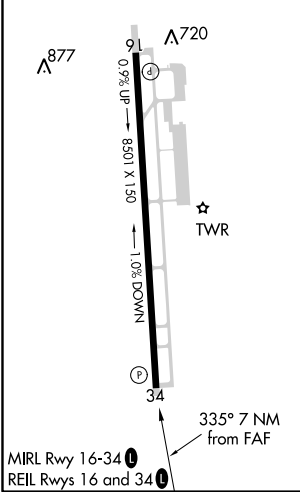
LAUGHLIN/BULLHEAD INTL (IFP)

**⚠** Rwy 34 helicopter visibility reduction below ¼ SM NA. DME required. Circling Rwy 16 NA at night. MISSED APPROACH: Climbing right turn to 6000 on heading 120° and EED VORTAC R-344 to EED VORTAC and hold.

ATIS* <b>119.825</b>	LOS ANGELES CENTER <b>134.65 360.65</b>	BULLHEAD TOWER* <b>123.9 (CTAF) 0</b>	GND CON <b>118.25</b>
-------------------------	--	--	--------------------------



ELEV 707	<b>D</b> TDZE 707
----------	-------------------



CATEGORY	A	B	C	D
S-34	2840-1¼ 2133 (2200-1¼)	2840-1½ 2133 (2200-1½)	2840-3	2133 (2200-3)
<b>C</b> CIRCLING	2840-1¼ 2133 (2200-1¼)	2840-1½ 2133 (2200-1½)	2840-3	2133 (2200-3)

SW-4, 10 OCT 2019 to 07 NOV 2019

SW-4, 10 OCT 2019 to 07 NOV 2019