

# GPS RWY 12R

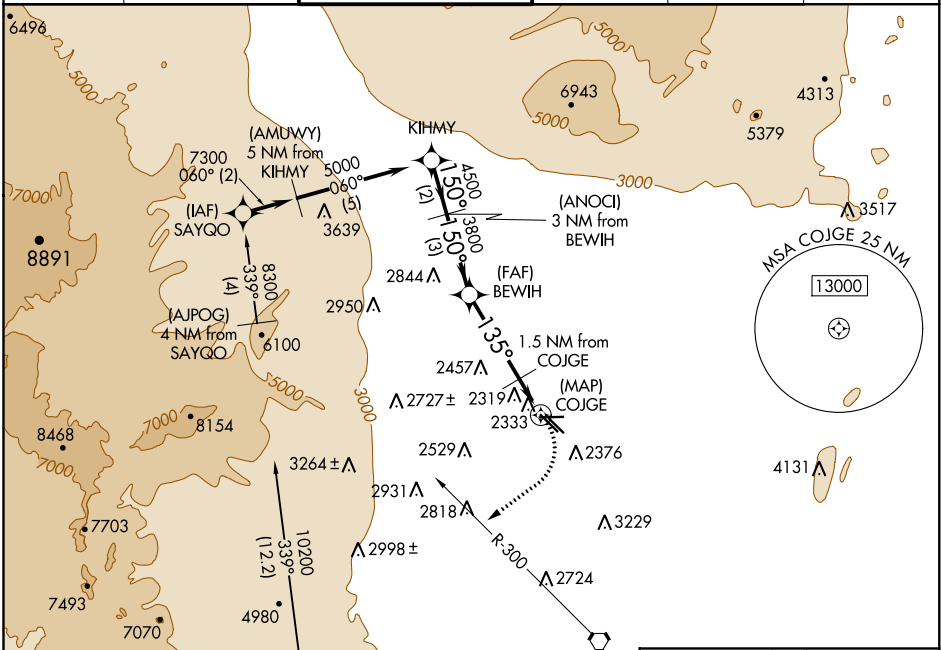
NORTH LAS VEGAS (VGT)

APP CRS	Rwy Idg	<b>5000</b>
<b>135°</b>	TDZE	<b>2205</b>
	Apt Elev	<b>2205</b>

**NA** When local altimeter setting not received, use McCarran Intl altimeter setting and increase all MDA 40 feet and S-12R Cat D visibility ¼ mile. Circling to Rwy 12L-30R NA.

**MISSED APPROACH:** Climbing right turn to 4000 via heading 220° and LAS R-300 to LAS VORTAC.

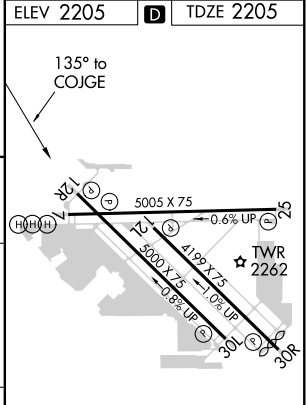
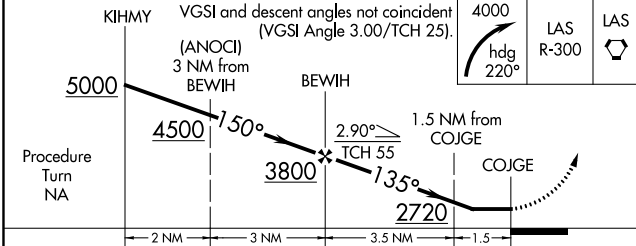
ATIS <b>118.05</b>	LAS VEGAS APP CON <b>119.4 360.85</b>	NORTH LAS VEGAS TOWER * <b>125.7 (CTAF) 360.75</b>	GND CON <b>121.7</b>	CLNC DEL <b>124.0</b>	UNICOM <b>122.95</b>
-----------------------	--	---	-------------------------	--------------------------	-------------------------



SW-4, 10 OCT 2019 to 07 NOV 2019

SW-4, 10 OCT 2019 to 07 NOV 2019

ELEV 2205	TDZE 2205
-----------	-----------



CATEGORY	A	B	C	D
S-12R	2620-1 415 (500-1)		2620-1¼ 415 (500-1¼)	
CIRCLING	2680-1 475 (500-1)		2680-1½ 475 (500-1½)	2760-2 555 (600-2)

REIL all Rwy's  
MIRL Rwy's 7-25 and 12L-30R  
MIRL Rwy's 12R-30L