

APP CRS	Rwy Idg	5000
285°	TDZE	2191
	Apt Elev	2205

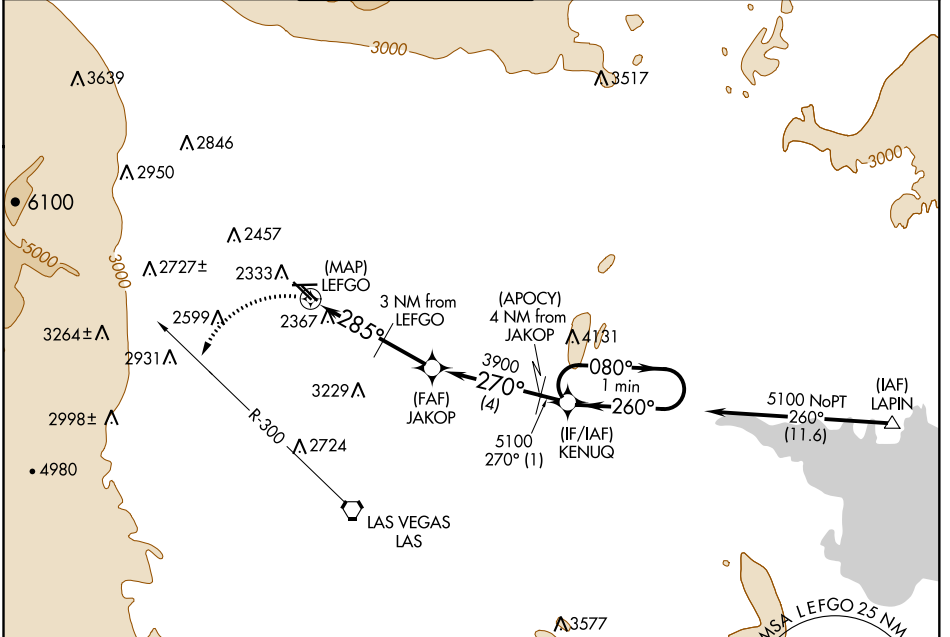
GPS RWY 30L

NORTH LAS VEGAS (VGT)

NA When local altimeter setting not received, use McCarran Intl altimeter setting and increase all MDA 40 feet and S-30L Cats C/D visibility ¼ mile. Circling to Rwy 12L-30R NA.

MISSED APPROACH: Climbing left turn to 4000 via heading 220° and LAS R-300 to LAS VORTAC.

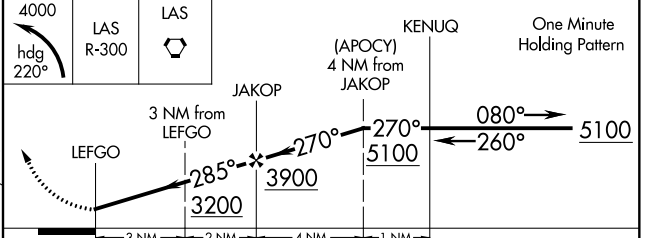
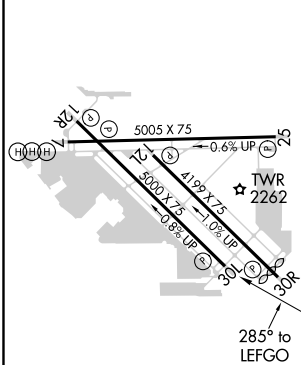
ATIS 118.05	LAS VEGAS APP CON 119.4 360.85	NORTH LAS VEGAS TOWER * 125.7 (CTAF) 360.75	GND CON 121.7	CLNC DEL 124.0	UNICOM 122.95
-----------------------	--	--	-------------------------	--------------------------	-------------------------



SW-4, 10 OCT 2019 to 07 NOV 2019

SW-4, 10 OCT 2019 to 07 NOV 2019

ELEV 2205	D	TDZE 2191
-----------	----------	-----------



CATEGORY	A	B	C	D
S-30L	2680-1	489 (500-1)	2680-1¼ 489 (500-1¼)	2680-1½ 489 (500-1½)
CIRCLING	2720-1	515 (600-1)	2720-1½ 515 (600-1½)	2760-2 555 (600-2)

REIL all Rwy 1
MIRL Rwy 7-25 and 12L-30R
MIRL Rwy 12R-30L