

WAAS CH <b>82518</b> <b>W35A</b>	APP CRS <b>354°</b>	Rwy Idg <b>3898</b> TDZE <b>822</b> Apt Elev <b>824</b>
--	------------------------	--

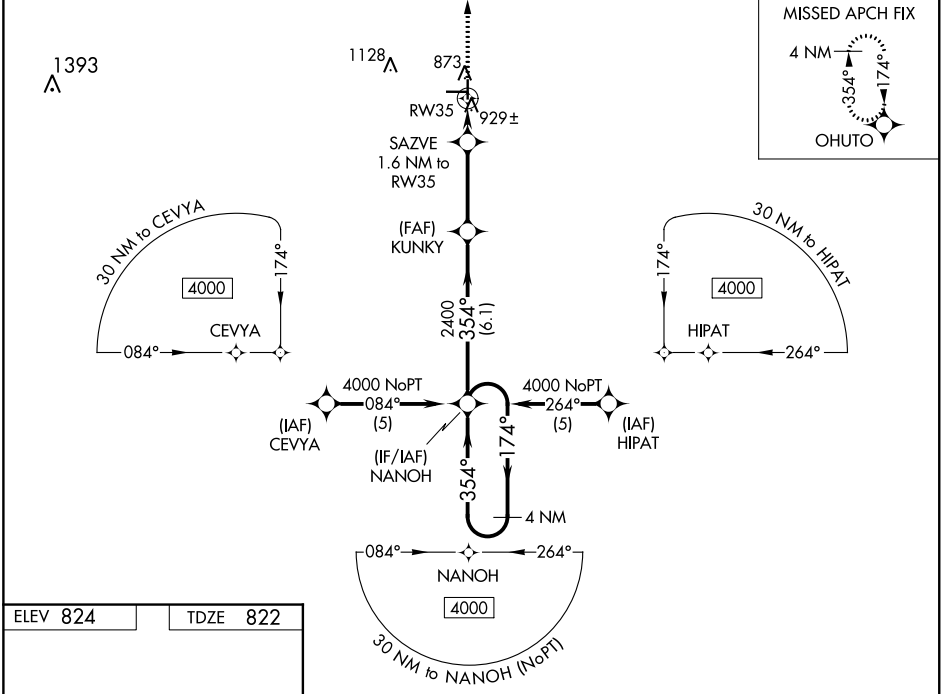
# RNAV (GPS) RWY 35

HUTSON FIELD (GAF)

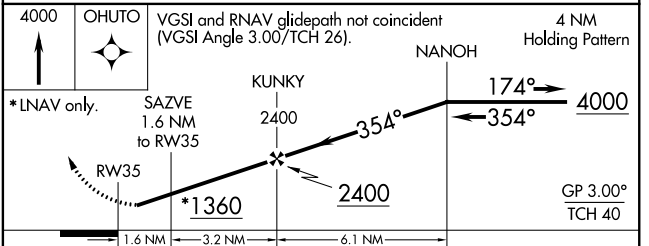
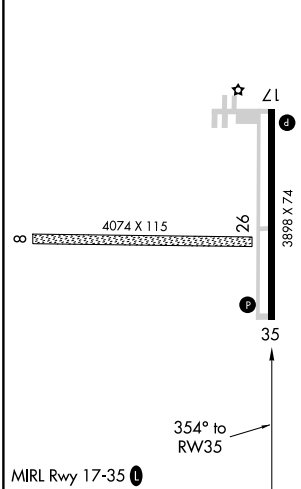
**⚠ NA** For uncompensated Baro-VNAV systems, LNAV/VNAV NA below -16°C (4°F) or above 54°C (130°F). DME/DME RNP-0.3 NA. Visibility reduction by helicopters NA. When local altimeter setting not received, use Grand Forks Intl altimeter setting and increase all DA 69 feet and all MDA 80 feet. Increase LPV and LNAV/VNAV all Cats and LNAV Cat C visibility ¼ mile. Baro-VNAV NA when using Grand Forks Intl altimeter setting.

MISSED APPROACH: Climb to 4000 direct OHUTO and hold, continue climb-in-hold to 4000.

AWOS-3 <b>118.625</b>	GRAND FORKS APP CON <b>118.1 318.1</b>	UNICOM <b>122.8 (CTAF)</b> <b>①</b>
--------------------------	---	--



ELEV <b>824</b>	TDZE <b>822</b>
-----------------	-----------------



CATEGORY	A	B	C	D
LPV DA		1072-1	250 (300-1)	NA
LNAV/VNAV DA		1199-1¼	377 (400-1¼)	NA
LNAV MDA		1180-1	358 (400-1)	NA
CIRCLING	1340-1	516 (600-1)	1340-1½ 516 (600-1½)	NA

NC-1, 10 OCT 2019 to 07 NOV 2019

NC-1, 10 OCT 2019 to 07 NOV 2019