

WAAS CH 77725 W18A	APP CRS 178°	Rwy Idg TDZE Apt Elev	3807 282 282
--	------------------------	-----------------------------	---

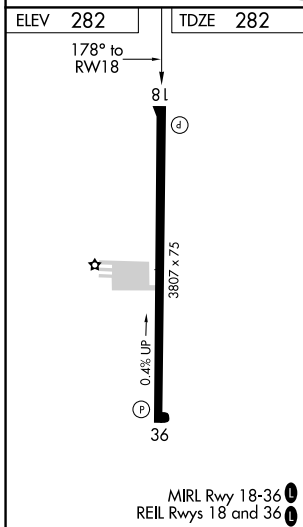
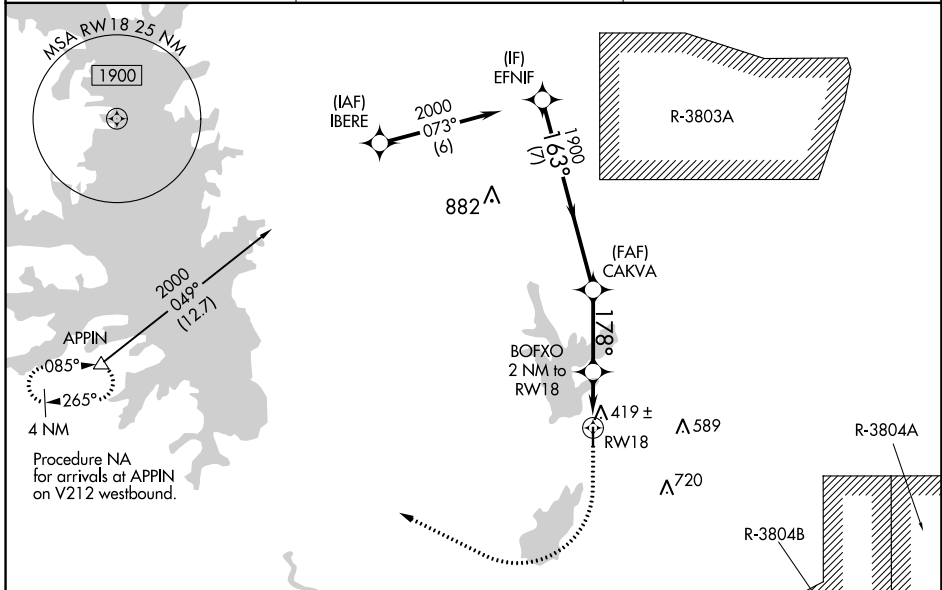
RNAV (GPS) RWY 18

LEESVILLE (L39)

NA When VGSI inop, Circling Rwy 36 NA at night. Baro-VNAV NA. When VGSI inop, Straight-in/Circling Rwy 18 procedure NA at night. DME/DME RNP-0.3 NA. Visibility reduction by helicopters NA. Use Fort Polk altimeter setting; when not received, use De Ridder altimeter setting and increase all DA 26 feet and all MDA 40 feet. Increase LNAV/VNAV all Cats visibility to 1/4 mile and LNAV Cat C visibility to 1/8 mile.

MISSED APPROACH: Climb to 800 then climbing right turn to 4000 direct APPIN and hold.

POE ATIS 134.85 282.2	POLK APP CON 123.7 261.3	UNICOM 122.8 (CTAF)
---------------------------------	------------------------------------	-------------------------------



RADAR REQUIRED

ELEV 282	TDZE 282
800	4000
APPIN	
*LNAV only.	
BOFXO 2 NM to RW18	CAKVA
RW18	EFNIF
2 NM	2.9 NM
178°	163°
960*	1900
7 NM	2000
	GP 3.00°
	TCH 50
CATEGORY	A
LPV DA	564-1
LNAV/VNAV DA	622-1 1/8
LNAV MDA	720-1
CIRCLING	760-1

SC-4, 10 OCT 2019 to 07 NOV 2019

SC-4, 10 OCT 2019 to 07 NOV 2019