

WAAS CH 69608 W36A	APP CRS 359°	Rwy Idg 6500 TDZE -2 Apt Elev 0
--	------------------------	--

RNAV (GPS) RWY 36

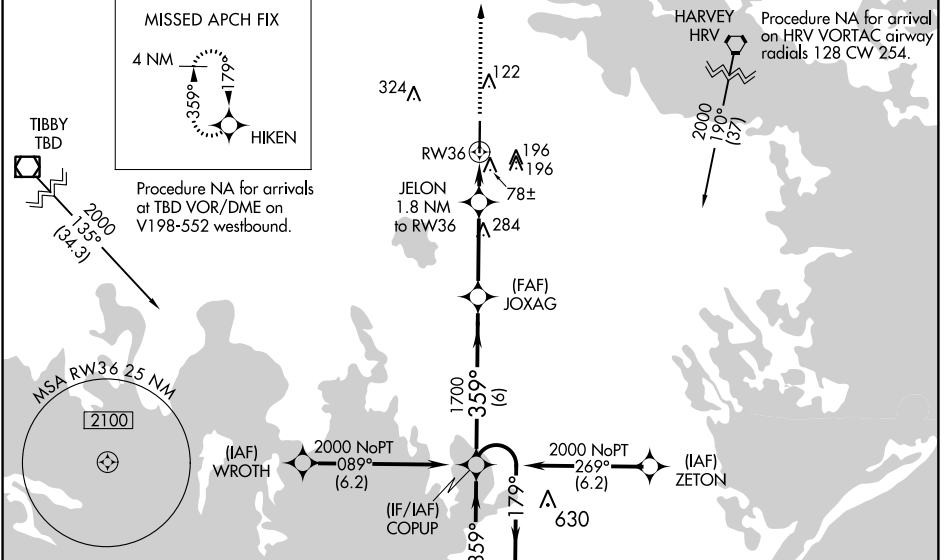
SOUTH LAFOURCHE LEONARD MILLER JR (G.A.O)

⚠ DME/DME RNP-0.3 NA. For uncompensated Baro-VNAV systems, LNAV/VNAV NA below -15°C (5°F) or above 54°C (130°F). For inop SSALR, increase LNAV/VNAV all Cats visibility to ¾ mile and LNAV Cat C and D visibility to 1 mile. When local altimeter setting not received, use Louis Armstrong New Orleans Intl altimeter setting and increase all DA 77 feet and all MDA 80 feet and increase LNAV/VNAV all Cats visibility ½ mile, LNAV Cat C and D visibility ½ mile and Circling Cat C and D visibility ½ mile. For inop SSALR, when using Louis Armstrong New Orleans Intl altimeter setting, increase LPV and LNAV/VNAV all Cats visibility ¾ mile. Baro-VNAV and VDP NA when using Louis Armstrong New Orleans Intl altimeter setting.

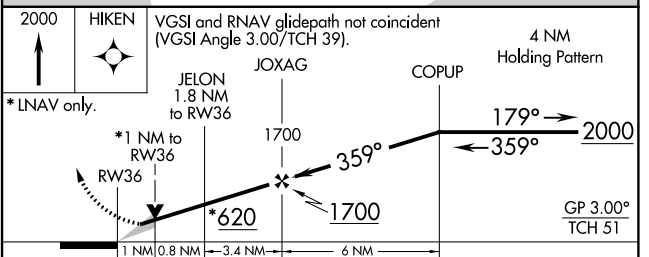
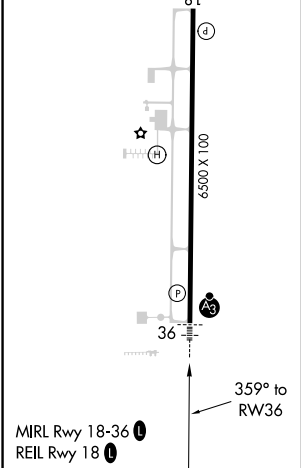


MISSED APPROACH:
Climb to 2000 direct HIKEN and hold.

AWOS-3PT 118.175	NEW ORLEANS APP CON 120.85 256.9	NEW ORLEANS CLNC DEL 120.85	UNICOM 123.0 (CTAF) 0
----------------------------	--	---------------------------------------	---------------------------------



ELEV 0	TDZE -2
--------	---------



CATEGORY	A	B	C	D
LPV DA		198-½ 200 (200-½)		
LNAV/VNAV DA		248-½ 250 (300-½)		
LNAV MDA	340-½ 342 (400-½)		340-⅝ 342 (400-⅝)	
<input checked="" type="checkbox"/> CIRCLING	440-1 440 (500-1)	560-1 560 (600-1)	640-1¾ 640 (700-1¾)	640-2 640 (700-2)

SC-4, 10 OCT 2019 to 07 NOV 2019

SC-4, 10 OCT 2019 to 07 NOV 2019