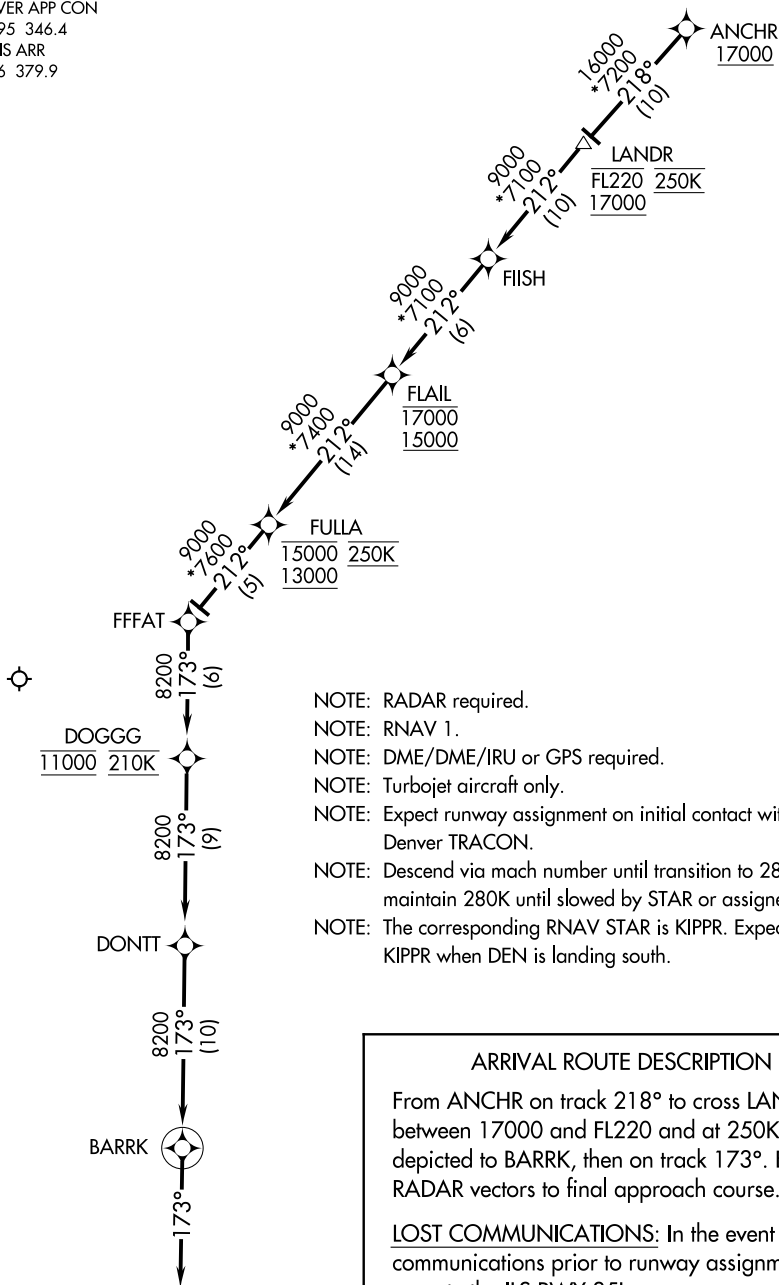


DENVER APP CON
124.95 346.4
D-ATIS ARR
125.6 379.9



SW-1, 10 OCT 2019 to 07 NOV 2019

SW-1, 10 OCT 2019 to 07 NOV 2019

- NOTE: RADAR required.
- NOTE: RNAV 1.
- NOTE: DME/DME/IRU or GPS required.
- NOTE: Turbojet aircraft only.
- NOTE: Expect runway assignment on initial contact with Denver TRACON.
- NOTE: Descend via mach number until transition to 280K, maintain 280K until slowed by STAR or assigned by ATC.
- NOTE: The corresponding RNAV STAR is KIPPR. Expect KIPPR when DEN is landing south.

ARRIVAL ROUTE DESCRIPTION

From ANCHR on track 218° to cross LANDR between 17000 and FL220 and at 250K, then as depicted to BARRK, then on track 173°. Expect RADAR vectors to final approach course.

LOST COMMUNICATIONS: In the event of lost communications prior to runway assignment, execute the ILS RWY 35L.

NOTE: Chart not to scale.