

BAYLR FOUR DEPARTURE (RNAV)

AL-9077 (FAA)

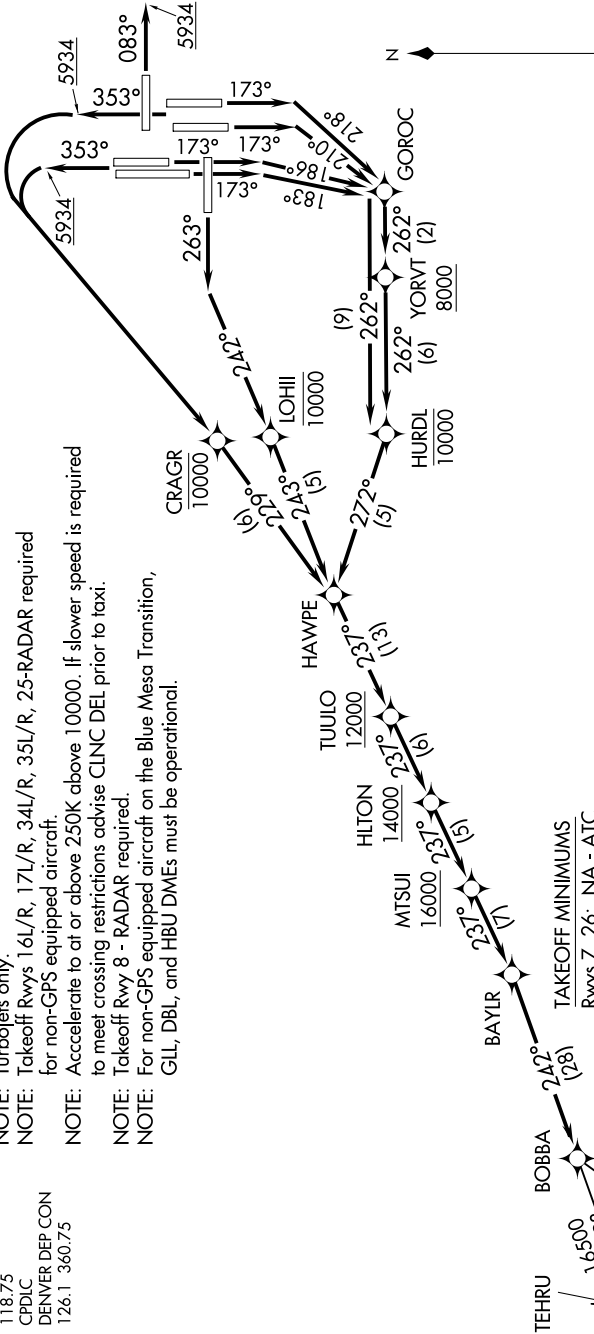
DENVER INTL (DEN)
DENVER, COLORADO

6102 AON Z0 01 614200 01 '1-MS

D-ATIS DEP
134.025
CLNC DEL
118.75
CPDLC
DENVER DEP CON
126.11 360.75

- NOTE: DME/DME/IRU or GPS required.
- NOTE: RNAV 1.
- NOTE: Turbojets only.
- NOTE: Takeoff Rwys 16L/R, 17L/R, 34L/R, 35L/R, 25-RADAR required for non-GPS equipped aircraft.
- NOTE: Accelerate to or above 250K above 10000. If slower speed is required to meet crossing restrictions advise CLNC DEL prior to taxi.
- NOTE: Takeoff Rwy 8 - RADAR required.
- NOTE: For non-GPS equipped aircraft on the Blue Mesa Transition, GLL, DBL, and HBU DMEs must be operational.

**TOP ALTITUDE:
FL230**



- TAKEOFF MINIMUMS
- Rwys 7, 26: NA - ATC.
- Rwy 8: Standard with minimum climb of 400' per NM to 5934.
- Rwy 16L: Standard with minimum climb of 425' per NM to 5934, then minimum climb of 265' per NM to 16500.
- Rwy 16R: Standard with minimum climb of 420' per NM to 5934, then minimum climb of 270' per NM to 16500.
- Rwy 17L: Standard with minimum climb of 450' per NM to 6400, then minimum climb of 265' per NM to 16500.
- Rwy 17R: Standard with minimum climb of 460' per NM to 7000, then minimum climb of 265' per NM to 16500.
- Rwy 25: Standard with minimum climb of 410' per NM to 5934, then minimum climb of 275' per NM to 16500.
- Rwys 34L/R: Standard with minimum climb of 400' per NM to 5934, then minimum climb of 265' per NM to 16500.
- Rwys 35L/R: Standard with minimum climb of 400' per NM to 5934, then minimum climb of 260' per NM to 16500.

NOTE: Chart not to scale.

(NARRATIVE ON FOLLOWING PAGE)

SW-1, 10 OCT 2019 to 07 NOV 2019