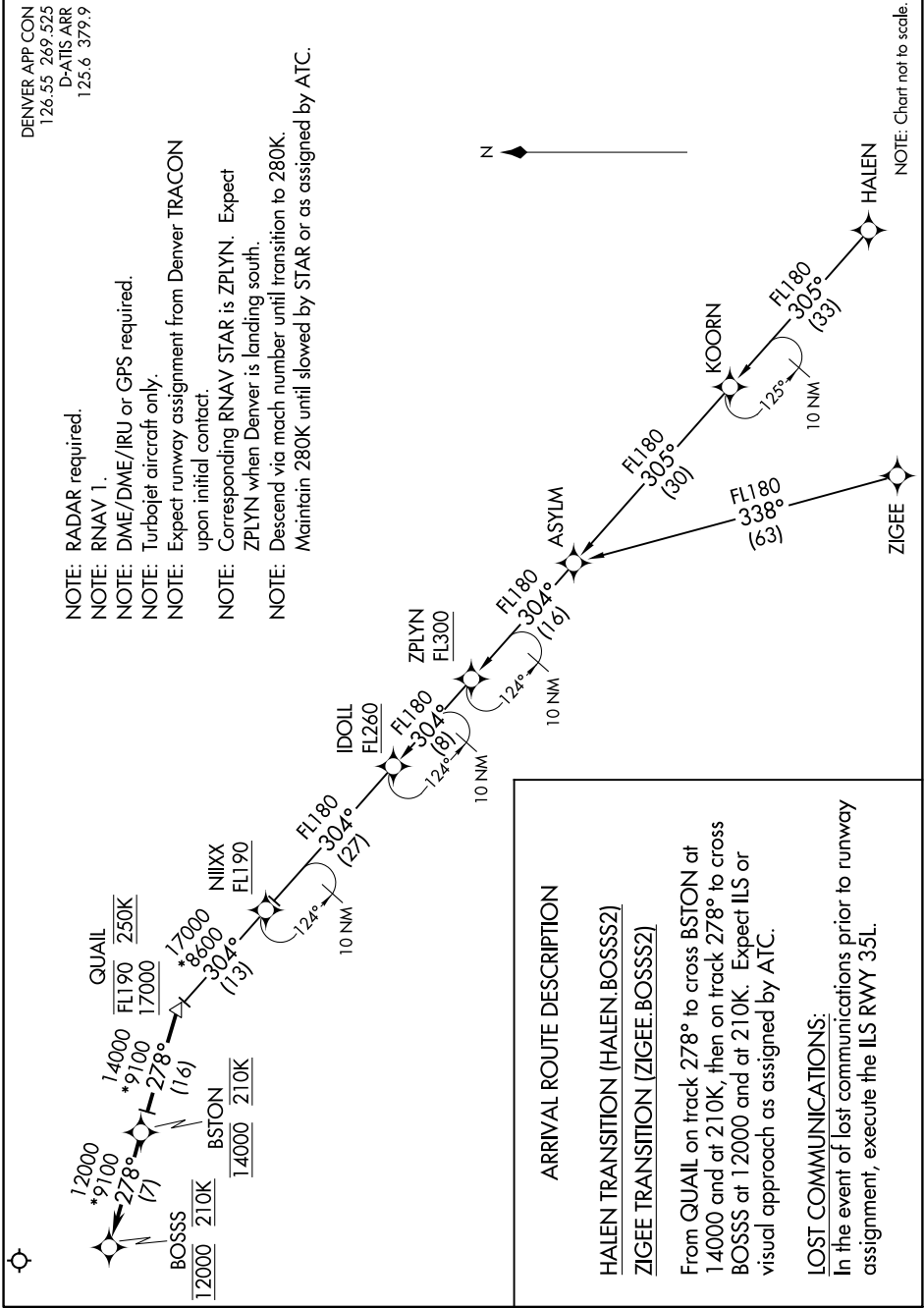


16 OCT 2019 10:07:11-MSW



DENVER APP CON
126.55 269.525
D-ATIS ARR
125.6 379.9

- NOTE: RADAR required.
- NOTE: RNAV 1.
- NOTE: DME/DME/IRU or GPS required.
- NOTE: Turboprop aircraft only.
- NOTE: Expect runway assignment from Denver TRACON upon initial contact.
- NOTE: Corresponding RNAV STAR is ZPLYN. Expect ZPLYN when Denver is landing south.
- NOTE: Descend via mach number until transition to 280K. Maintain 280K until slowed by STAR or as assigned by ATC.



NOTE: Chart not to scale.

SW-1, 10 OCT 2019 to 07 NOV 2019