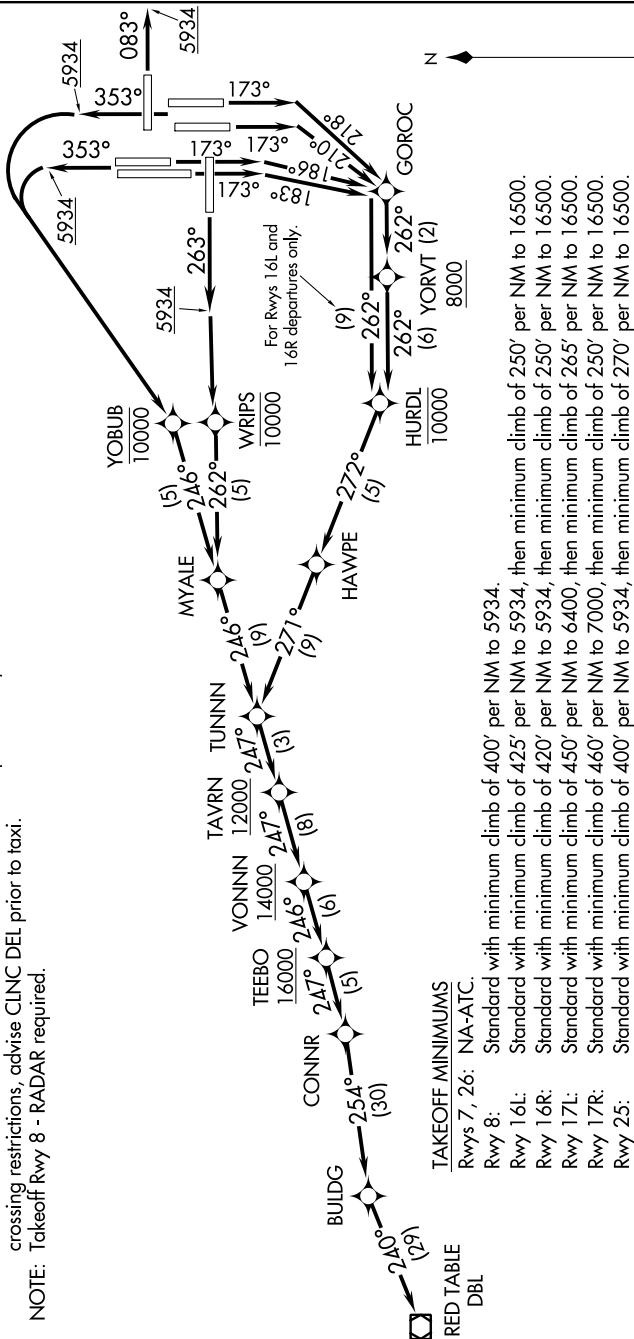


610Z AON ZD 01 610Z TOC 01 '1-MS

**TOP ALTITUDE:
FL230**

D-ATIS DEP
134.025
CLNC DEL
118.75
CPDLC
DENVER DEP CON
126.1 360.75

- NOTE: DME/DME/IRU or GPS required.
- NOTE: RNAV 1.
- NOTE: Turbojets only.
- NOTE: Takeoff Rws 16L/R, 17L/R, 34L/R, 35L/R, 25 - RADAR required.
- NOTE: for non-GPS equipped aircraft.
- NOTE: Accelerate to at or above 250K above 10000. If slower speed is required to meet crossing restrictions, advise CLNC DEL prior to taxi.
- NOTE: Takeoff Rwy 8 - RADAR required.



TAKEOFF MINIMUMS

Rws 7, 26: NA-ATC.	Standard with minimum climb of 400' per NM to 5934.
Rwy 8:	Standard with minimum climb of 425' per NM to 5934, then minimum climb of 250' per NM to 16500.
Rwy 16L:	Standard with minimum climb of 420' per NM to 5934, then minimum climb of 250' per NM to 16500.
Rwy 16R:	Standard with minimum climb of 450' per NM to 6400, then minimum climb of 265' per NM to 16500.
Rwy 17L:	Standard with minimum climb of 460' per NM to 7000, then minimum climb of 250' per NM to 16500.
Rwy 17R:	Standard with minimum climb of 400' per NM to 5934, then minimum climb of 270' per NM to 16500.
Rwy 25:	Standard with minimum climb of 400' per NM to 5934, then minimum climb of 250' per NM to 16500.
Rws 34L/R:	Standard with minimum climb of 400' per NM to 5934, then minimum climb of 250' per NM to 16500.
Rws 35L/R:	Standard with minimum climb of 400' per NM to 5934, then minimum climb of 250' per NM to 16500.

(NARRATIVE ON FOLLOWING PAGE)

NOTE: Chart not to scale.

SW-1, 10 OCT 2019 to 07 NOV 2019