

D-ATIS DEP
134.025
CLINC DEL
118.75
CPDLC
DENVER DEP CON
126.1 360.75

**TOP ALTITUDE:
FL230**

6102 AON Z 01 2010 OCT 10 07 11-MS

TAKEOFF MINIMUMS

Rwys 7, 26: NA-ATC.

Rwy 8: Standard with minimum climb of 400' per NM to 5934.

Rwy 16L: Standard with minimum climb of 400' per NM to 5934, then minimum climb of 240' per NM to 16000.

Rwy 16R: Standard with minimum climb of 480' per NM to 5934, then minimum climb of 245' per NM to 16000.

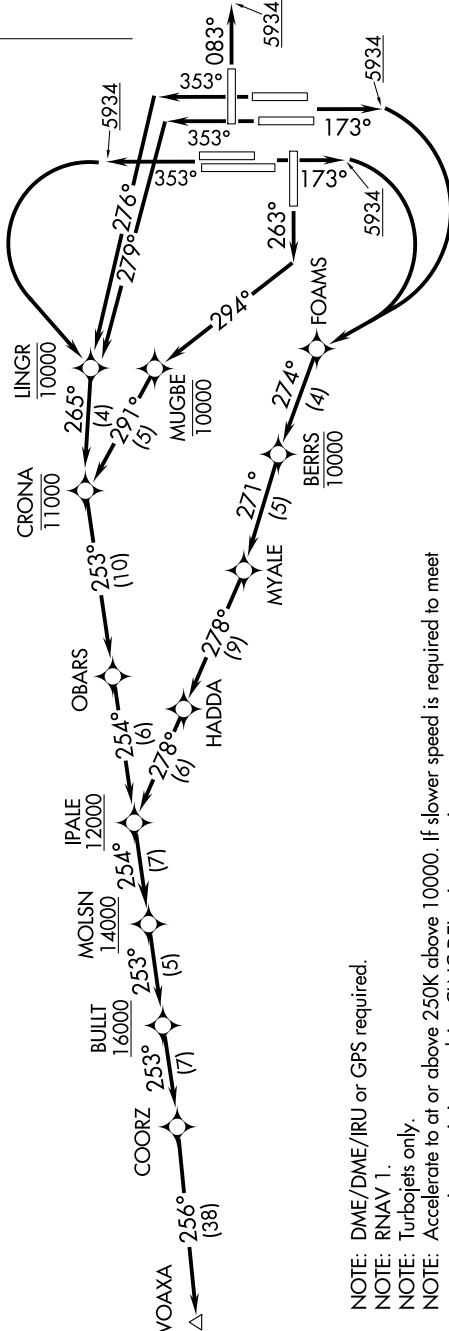
Rwys 17L/R: Standard with minimum climb of 400' per NM to 5934, then minimum climb of 240' per NM to 16000.

Rwy 25: Standard with minimum climb of 425' per NM to 5934, then minimum climb of 260' per NM to 16000.

Rwys 34L/R: Standard with minimum climb of 400' per NM to 5934, then minimum climb of 250' per NM to 16000.

Rwy 35L: Standard with minimum climb of 360' per NM to 5934, then minimum climb of 270' per NM to 16000.

Rwy 35R: Standard with minimum climb of 375' per NM to 5934, then minimum climb of 270' per NM to 16000.



NOTE: DME/DME/IRU or GPS required.

NOTE: RNAV 1.

NOTE: Turbojets only.

NOTE: Accelerate to at or above 250K above 10000. If slower speed is required to meet

crossing restrictions, advise CLINC DEL prior to taxi.

NOTE: Takeoff Rwys 16L/R, 17L/R, 25, 34L/R, 35L/R - RADAR required for non-GPS equipped aircraft.

NOTE: Takeoff Rwy 8 - RADAR required.

(NARRATIVE ON FOLLOWING PAGE)

NOTE: Chart not to scale.

SW-1, 10 OCT 2019 to 07 NOV 2019