

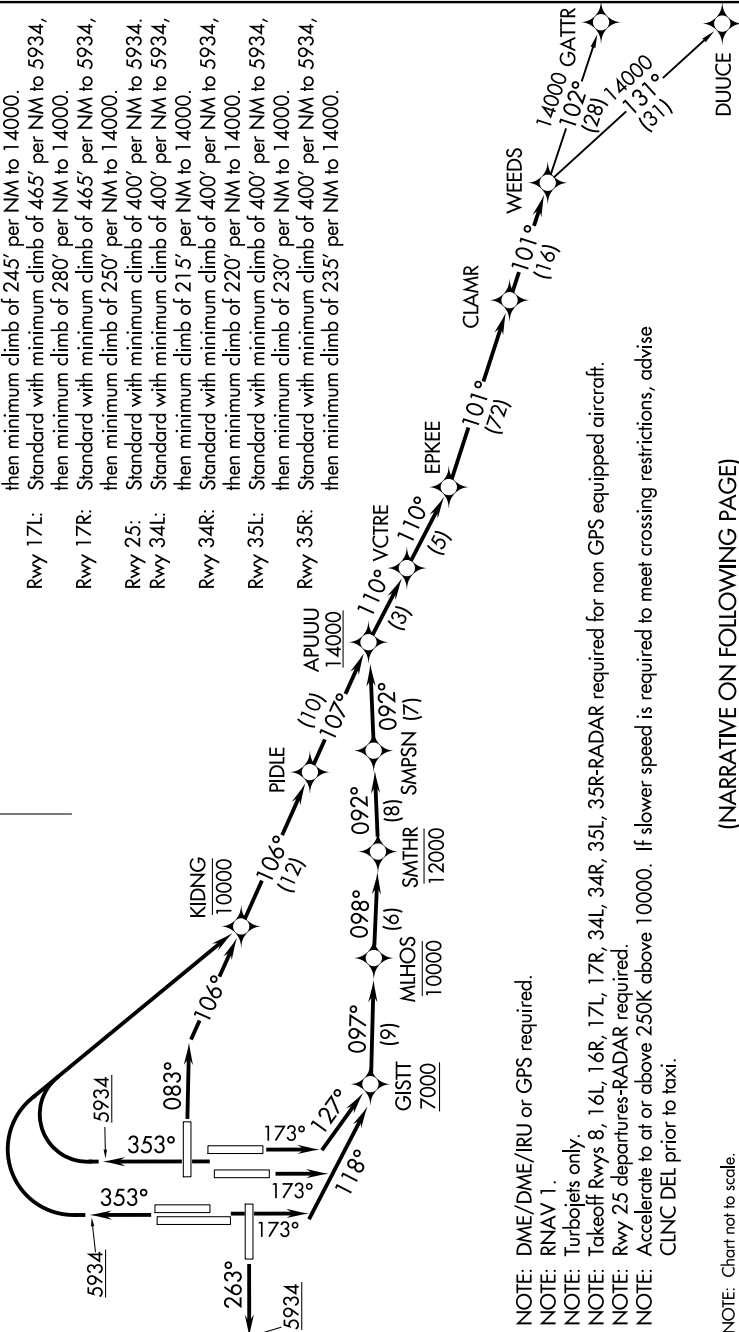
6102 AON Z0 01 610Z_TOO 01 '1'-WS

D-ATIS DEP
134.025
CLNC DEL
118.75
CPDLC
DENVER DEP CON
128.25 371.95

**TOP ALTITUDE:
FL230**

TAKEOFF MINIMUMS

- Rwy 7, 26: NA-ATC.
- Rwy 8: Standard with minimum climb of 500' per NM to 5934, then minimum climb of 255' per NM to 14000.
- Rwy 16L: Standard with minimum climb of 245' per NM to 14000.
- Rwy 16R: Standard with minimum climb of 450' per NM to 5934, then minimum climb of 245' per NM to 14000.
- Rwy 17L: Standard with minimum climb of 465' per NM to 5934, then minimum climb of 280' per NM to 14000.
- Rwy 17R: Standard with minimum climb of 465' per NM to 5934, then minimum climb of 250' per NM to 14000.
- Rwy 25: Standard with minimum climb of 400' per NM to 5934.
- Rwy 34L: Standard with minimum climb of 400' per NM to 5934, then minimum climb of 215' per NM to 14000.
- Rwy 34R: Standard with minimum climb of 400' per NM to 5934, then minimum climb of 220' per NM to 14000.
- Rwy 35L: Standard with minimum climb of 400' per NM to 5934, then minimum climb of 230' per NM to 14000.
- Rwy 35R: Standard with minimum climb of 400' per NM to 5934, then minimum climb of 235' per NM to 14000.



- NOTE: DME/DME/IRU or GPS required.
- NOTE: RNAV 1.
- NOTE: Turbojets only.
- NOTE: Takeoff Rwy 8, 16L, 16R, 17L, 17R, 34L, 34R, 35L, 35R-RADAR required for non GPS equipped aircraft.
- NOTE: Rwy 25 departures-RADAR required.
- NOTE: Accelerate to at or above 250K above 10000. If slower speed is required to meet crossing restrictions, advise CLNC DEL prior to taxi.

NOTE: Chart not to scale.

(NARRATIVE ON FOLLOWING PAGE)