

EXTAN FIVE DEPARTURE (RNAV)

AL-9077 (FAA)

DENVER INTL (DEN)

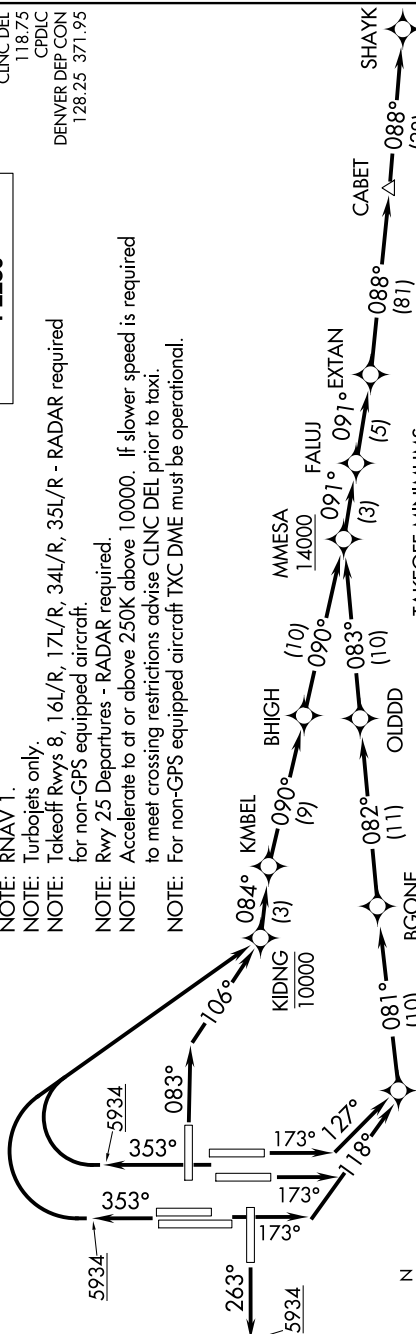
DENVER, COLORADO

610Z AON Z0 01 100Z L00 01 '1-MS

**TOP ALTITUDE:
FL230**

D-ATIS DEP
134.025
CLNC DEL
118.75
CPDLC
DENVER DEP CON
128.25 371.95

- NOTE: DME/DME/IRU or GPS required.
- NOTE: RNAV 1.
- NOTE: Turbojets only.
- NOTE: Takeoff Rwy 8, 16L/R, 17L/R, 34L/R, 35L/R - RADAR required for non-GPS equipped aircraft.
- NOTE: Rwy 25 Departures - RADAR required.
- NOTE: Accelerate to or above 250K above 10000. If slower speed is required to meet crossing restrictions advise CLNC DEL prior to taxi.
- NOTE: For non-GPS equipped aircraft TXC DME must be operational.



(NARRATIVE ON FOLLOWING PAGE)

NOTE: Chart not to scale.

SW-1, 10 OCT 2019 to 07 NOV 2019

EXTAN FIVE DEPARTURE (RNAV)

DENVER, COLORADO

DENVER INTL (DEN)