

# FOOOT FOUR DEPARTURE (RNAV)

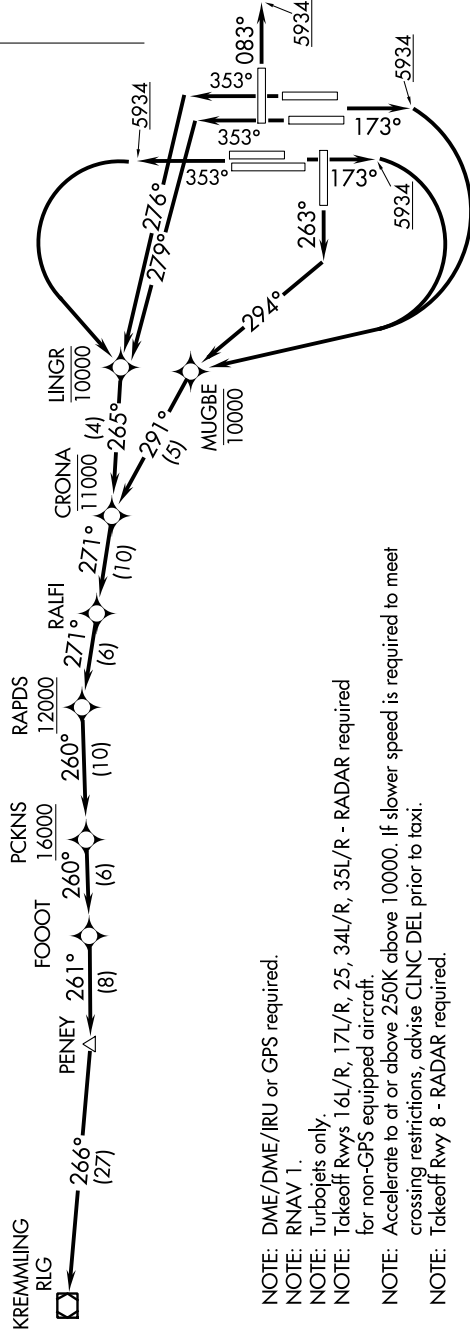
AL-9077 (FAA)

DENVER INTL (DEN)  
DENVER, COLORADO

D-ATIS DEP 134.025  
CLNC DEL 118.75  
CPDLC  
DENVER DEP CON 126.1 360.75

**TOP ALTITUDE:  
FL230**

**TAKEOFF MINIMUMS**  
 Rwy 7, 26: NA-ATC.  
 Rwy 8: Standard with minimum climb of 400' per NM to 5934.  
 Rwy 16L/R: Standard with minimum climb of 400' per NM to 5934, then minimum climb of 265' per NM to 16000.  
 Rwy 17L/R: Standard with minimum climb of 400' per NM to 5934, then minimum climb of 245' per NM to 16000.  
 Rwy 25: Standard with minimum climb of 425' per NM to 5934, then minimum climb of 265' per NM to 16000.  
 Rwy 34L/R: Standard with minimum climb of 400' per NM to 5934, then minimum climb of 260' per NM to 16000.  
 Rwy 35L/R: Standard with minimum climb of 400' per NM to 5934, then minimum climb of 250' per NM to 16000.



- NOTE: DME/DME/IRU or GPS required.
- NOTE: RNAV 1.
- NOTE: Turbojets only.
- NOTE: Takeoff Rwys 16L/R, 17L/R, 25, 34L/R, 35L/R - RADAR required for non-GPS equipped aircraft.
- NOTE: Accelerate to at or above 250K above 10000. If slower speed is required to meet crossing restrictions, advise CLNC DEL prior to taxi.
- NOTE: Takeoff Rwy 8 - RADAR required.

(NARRATIVE ON FOLLOWING PAGE)

NOTE: Chart not to scale.

SW-1, 10 OCT 2019 to 07 NOV 2019

# FOOOT FOUR DEPARTURE (RNAV)