

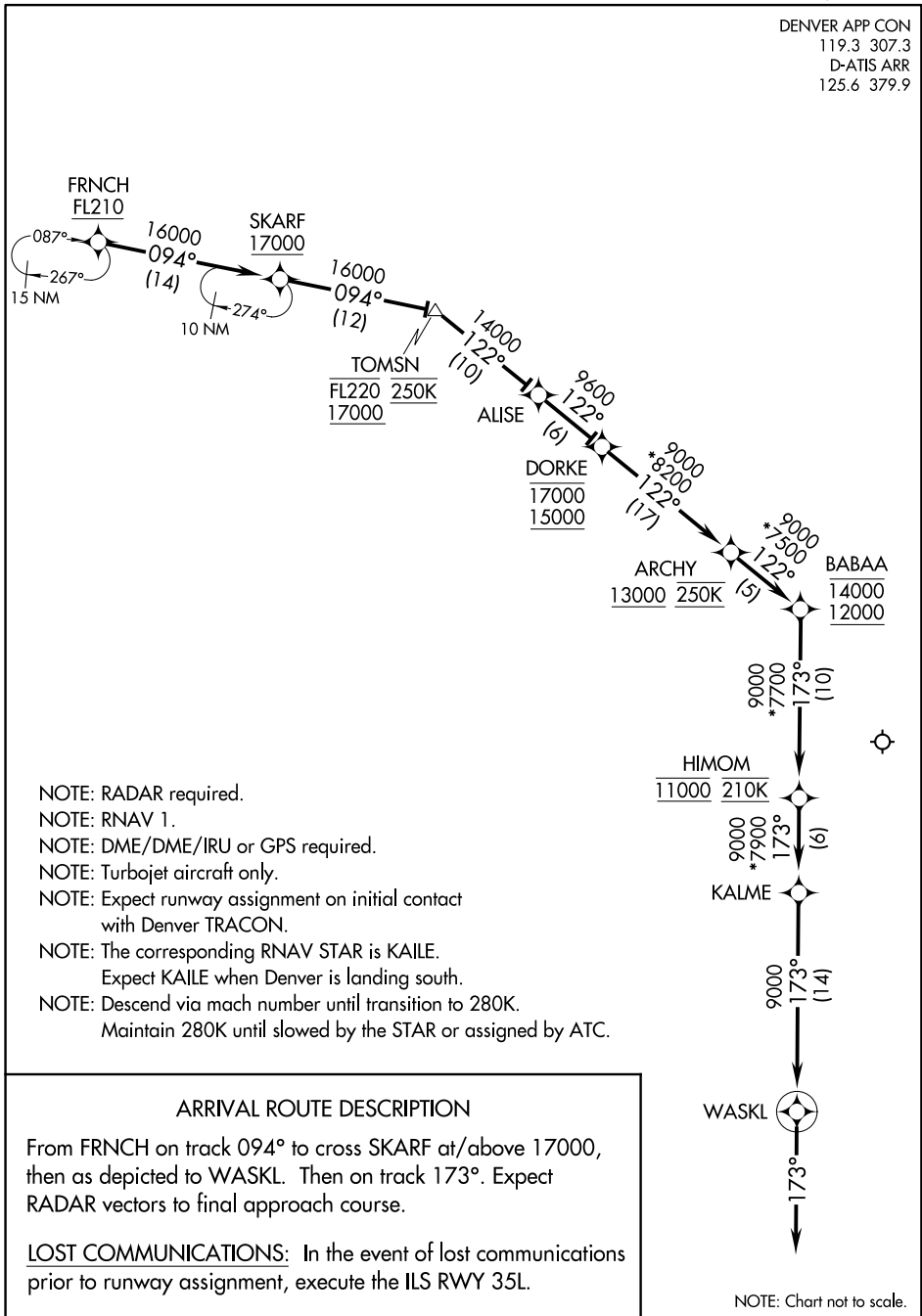
(FRNCH.FRNCH3) 17173

# FRNCH THREE ARRIVAL (RNAV) Arrival Route

AL-9077 (FAA)

DENVER INTL (DEN)  
DENVER, COLORADO

DENVER APP CON  
119.3 307.3  
D-ATIS ARR  
125.6 379.9



- NOTE: RADAR required.
- NOTE: RNAV 1.
- NOTE: DME/DME/IRU or GPS required.
- NOTE: Turbojet aircraft only.
- NOTE: Expect runway assignment on initial contact with Denver TRACON.
- NOTE: The corresponding RNAV STAR is KAILE. Expect KAILE when Denver is landing south.
- NOTE: Descend via mach number until transition to 280K. Maintain 280K until slowed by the STAR or assigned by ATC.

### ARRIVAL ROUTE DESCRIPTION

From FRNCH on track 094° to cross SKARF at/above 17000, then as depicted to WASKL. Then on track 173°. Expect RADAR vectors to final approach course.

LOST COMMUNICATIONS: In the event of lost communications prior to runway assignment, execute the ILS RWY 35L.

FRNCH THREE ARRIVAL (RNAV) Arrival Route  
(FRNCH.FRNCH3) 18SEP14

DENVER, COLORADO  
DENVER INTL (DEN)

SW-1, 10 OCT 2019 to 07 NOV 2019

SW-1, 10 OCT 2019 to 07 NOV 2019