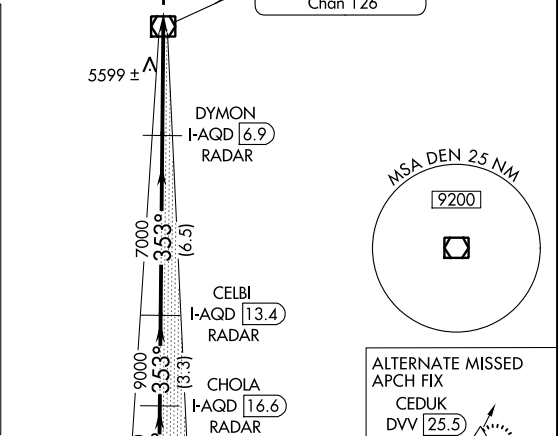
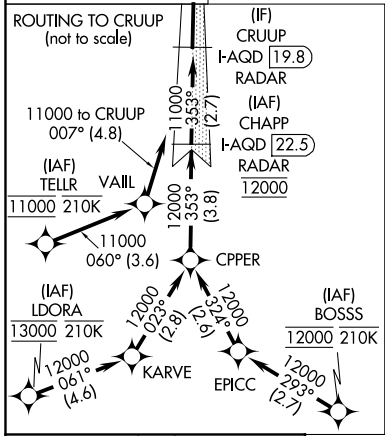
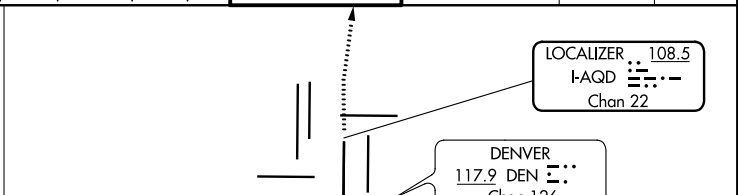
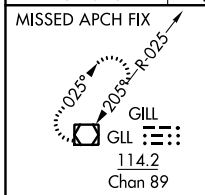


LOC/DME I-AQD 108.5 Chan 22	APP CRS 353°	Rwy Idg 12000 TDZE 5434 Apt Elev 5434
---	------------------------	--

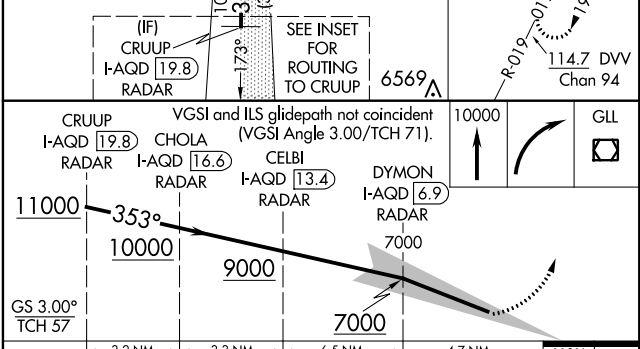
ILS RWY 35L (SA CAT I)

DENVER INTL (DEN)

RNAV 1-GPS or RADAR required for procedure entry.		ALS-F2 	MISSED APPROACH: Climb to 10000 then right turn direct GLL VOR/DME and hold.			
Simultaneous approach authorized. Requires specific OPSPEC, MSPEC, or LOA approval and use of HUD to DH.						
D-ATIS ARR 125.6 379.9 DEF 134.025	DENVER APP CON 119.3 307.3 (NORTH)	120.35 379.3 (SOUTH)	DENVER TOWER 133.3 322.45	GND CON 121.85 377.1	CLNC DEL 118.75	CPDLC



ELEV 5434	D	TDZE 5434
-----------	----------	-----------



CATEGORY	A	B	C	D
S-ILS 35L	RA 165/14 150 DA 5584			

SA CATEGORY I ILS - SPECIAL AIRCREW & AIRCRAFT CERTIFICATION REQUIRED

HIRL all Rwy
TDZ/CL Rwy 7, 16L, 16R, 17R, 26, 34L, 34R, 35L, 35R

SW-1, 10 OCT 2019 to 07 NOV 2019

SW-1, 10 OCT 2019 to 07 NOV 2019