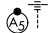


ILS or LOC RWY 16R

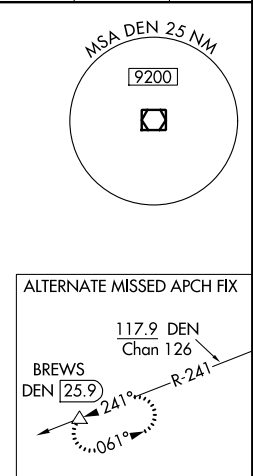
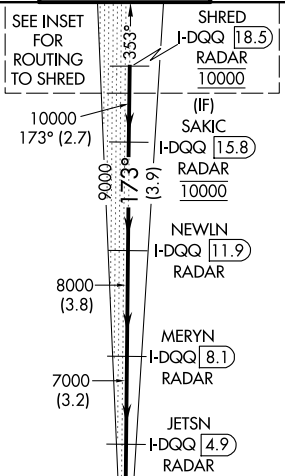
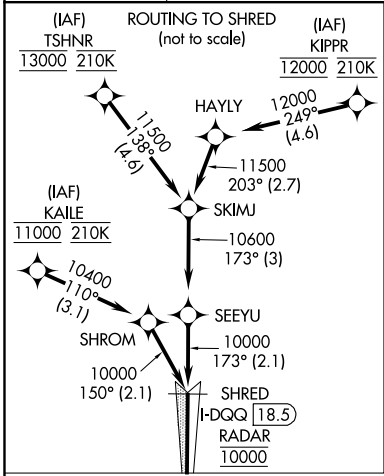
DENVER INTL (DEN)

LOC/DME I-DQQ 111.9 Chan 56	APP CRS 173°	Rwy Idg 16000 TDZE 5326 Apt Elev 5434
---	------------------------	--

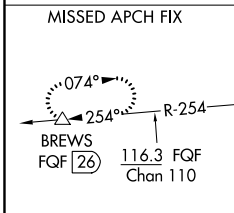
▼ For inoperative MALSR, increase S-LOC Cat C/D visibility to RVR 4500. Simultaneous approach authorized with Rwy 17L and 17R. DME required.

MALSR  MISSED APPROACH: Climb to 5900 then climbing right turn to 12000 on heading 218° and on FGF VORTAC R-254 to BREWS/FQF 26 DME and hold.

D-ATIS ARR 125.6 379.9 DEF 134.025	DENVER APP CON 119.3 307.3 120.35 379.3 (NORTH) (SOUTH)	DENVER TOWER 135.3 351.95	GND CON 127.5 379.175	CLNC DEL 118.75	CPDLC
--	--	-------------------------------------	---------------------------------	---------------------------	-------

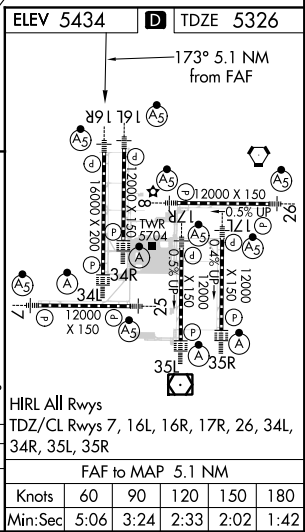
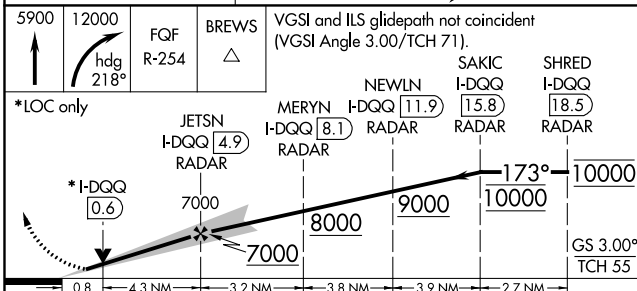


RADAR or GPS REQUIRED



LOCALIZER **111.9**
I-DQQ 
Chan 56

DENVER **117.9** DEN Chan 126



CATEGORY	A	B	C	D
S-ILS 16R		5526/18 200 (100-½)		
S-LOC 16R		5640/24 314 (300-½)		

SW-1, 10 OCT 2019 to 07 NOV 2019

SW-1, 10 OCT 2019 to 07 NOV 2019