

LOC/DME I-ACX 108.5 Chan 22	APP CRS 173°	Rwy Idg TDZE Apt Elev	12000 5392 5434
---	------------------------	-----------------------------	--

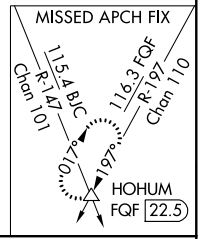
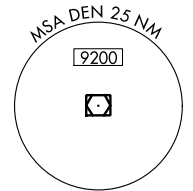
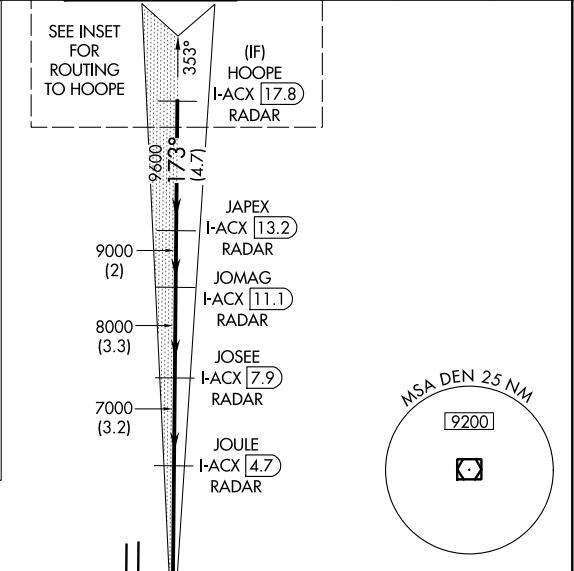
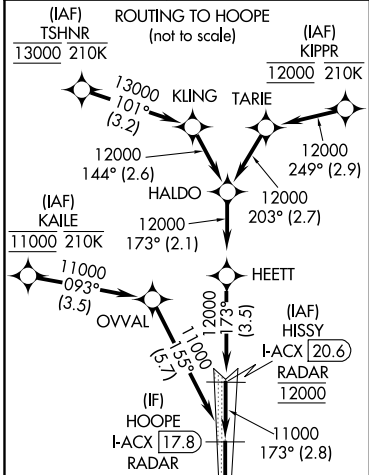
ILS or LOC RWY 17R

DENVER INTL (DEN)

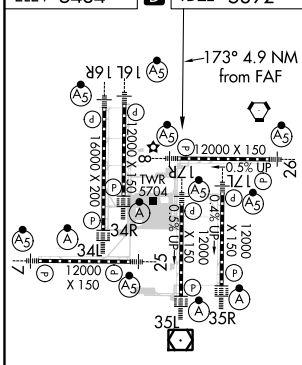
DME or RADAR required for LOC only.
RNAV 1-GPS or RADAR required for procedure entry.
Simultaneous approach authorized. For inop ALS, increase S-17R LOC Cat C/D visibility to RVR 5500.

MALSR
MISSED APPROACH: Climb to 10000 on heading 173° and on FQF VORTAC R-197 to HOHUM INT/ FQF 22.5 DME and hold.

D-ATIS ARR 125.6 379.9 DEP 134.025	DENVER APP CON 119.3 307.3 (NORTH) 120.35 379.3 (SOUTH)	DENVER TOWER 133.3 322.45	GND CON 121.85 377.1	CLNC DEL 118.75	CPDLC
--	---	-------------------------------------	--------------------------------	---------------------------	-------



A5824
ELEV 5434 TDZE 5392



LOCALIZER **108.5**
I-ACX
Chan 22

DENVER
117.9 DEN
Chan 126

10000	FQF R-197	HOHUM	VGS1 and ILS glidepath not coincident (VGS1 Angle 3.00/TCH 69). * LOC only				HOPE I-ACX [17.8] RADAR
hdg 173°			JOLE I-ACX [4.7] RADAR	JOSEE I-ACX [7.9] RADAR	JOMAG I-ACX [11.1] RADAR	JAPEX I-ACX [13.2] RADAR	
I-ACX DME ANTENNA	I-ACX [0.2]	I-ACX* [0.7]	7000	8000	9000	9600	11000
	0.9 NM	4 NM	3.2 NM	3.3 NM	2 NM	4.7 NM	GS 3.00° TCH 60
CATEGORY	A		B		C		D
S-ILS 17R	5592/18 200 (200-½)						
S-LOC 17R	5720/24 328 (300-½)		5720/30 328 (300-¾)				

TDZ/CL Rwy's 7, 16L, 16R, 17R, 26, 34L, 34R, 35L, 35R
HIRL all Rwy's

FAF to MAP 4.9 NM

Knots	60	90	120	150	180
Min:Sec	4:54	3:16	2:27	1:58	1:38

SW-1, 10 OCT 2019 to 07 NOV 2019

SW-1, 10 OCT 2019 to 07 NOV 2019