

LOC/DME I-ERP 111.55 Chan 52 (Y)	APP CRS 263°	Rwy Idg 12000 TDZE 5355 Apt Elev 5434
--	------------------------	--

ILS or LOC RWY 25

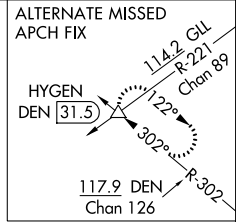
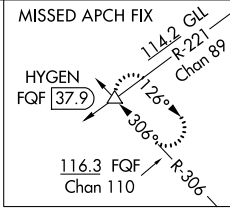
DENVER INTL (DEN)

Simultaneous approach authorized with Rwy 26. For inoperative MALSR, increase S-LOC 25 Cat C and D visibility to RVR 5500. **RVR 1800 authorized with use of FD or AP or HUD to DA.



MISSED APPROACH: Climb to 10000 on heading 263° and on FQF VORTAC R-306 to HYGEN INT/FQF 37.9 DME and hold.

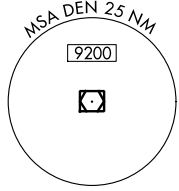
D-ATIS ARR 125.6 379.9 DEP 134.025	DENVER APP CON 119.3 307.3 (NORTH) 120.35 379.3 (SOUTH)	DENVER TOWER 128.75 273.55	GND CON 127.5 379.175	CLNC DEL 118.75	CPDLC
--	---	--------------------------------------	---------------------------------	---------------------------	-------



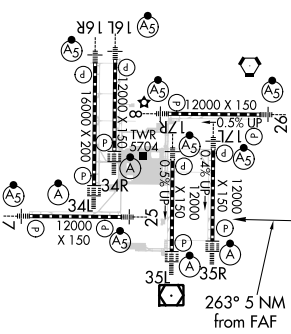
LOCALIZER .. 111.55
I-ERP : : - -
Chan 52 (Y)

DENVER
117.9 DEN : : :
Chan 126

FALCON
116.3 FQF : : : - -
Chan 110



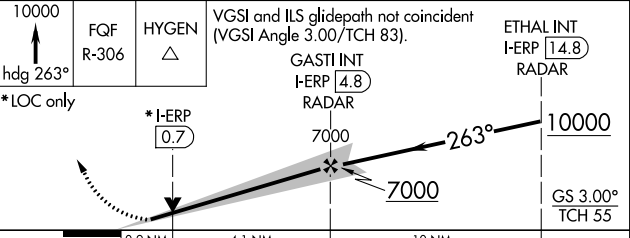
ELEV 5434	D	TDZE 5355
-----------	----------	-----------



HIRL all Rwys
TDZ/CL Rwy 7, 16L, 16R, 17R,
26, 34L, 34R, 35L, 35R
FAF to MAP 5 NM

Knots	60	90	120	150	180
Min:Sec	5:00	3:20	2:30	2:00	1:40

△ 6270 ± RADAR REQUIRED



CATEGORY	A	B	C	D
S-ILS 25 **	5555/24 200 (200-½)			
S-LOC 25	5720/24	365 (300-½)	5720/35	365 (300-⅝)

SW-1, 10 OCT 2019 to 07 NOV 2019

SW-1, 10 OCT 2019 to 07 NOV 2019