

# ILS or LOC RWY 35R

DENVER INTL (DEN)

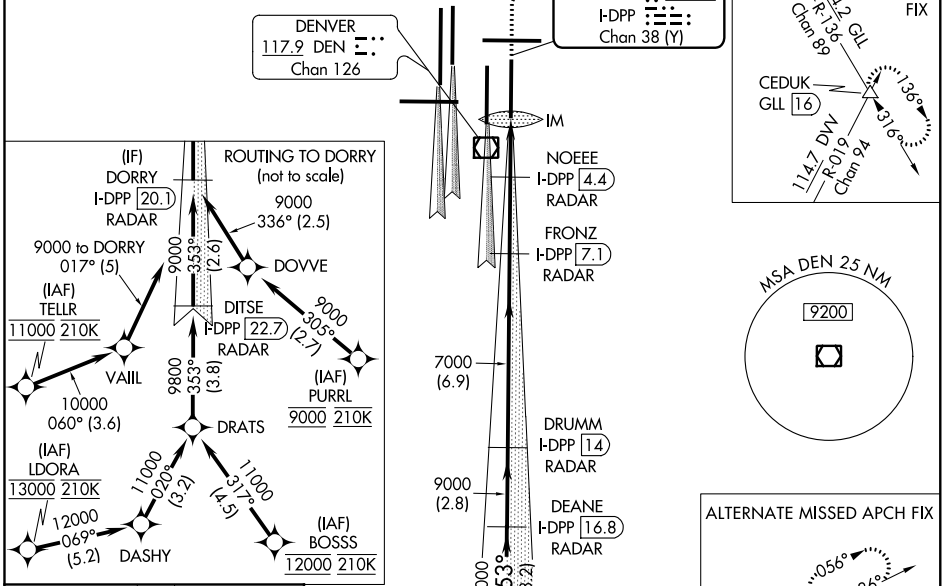
LOC/DME I-DPP <b>110.15</b> Chan <b>38(Y)</b>	APP CRS <b>353°</b>	Rwy Idg TDZE Apt Elev <b>12000</b> <b>5370</b> <b>5434</b>
---	------------------------	---

**▽** S-LOC 35R DME or RADAR required.  
Simultaneous approach authorized with Rwy 34L, Rwy 34R, and Rwy 35L.

ALSF-2  
**(A)**  
MISSED APPROACH: Climb to 5800 then climbing right turn to 10000 on heading 048° and on GLL VORTAC R-136 to CEDUK/GLL 16 DME and hold.

D-ATIS ARR <b>125.6 379.9</b> DEP <b>134.025</b>	DENVER APP CON <b>119.3 307.3 120.35 379.3</b> (NORTH) (SOUTH)	DENVER TOWER <b>132.35 239.275</b>	GND CON <b>121.85 377.1</b>	CLNC DEL <b>118.75</b>	CPDLC
--	---	---------------------------------------	--------------------------------	---------------------------	-------

## RADAR or GPS REQUIRED

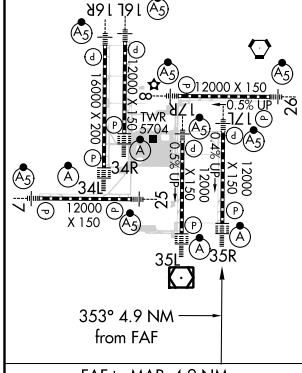


SW-1, 10 OCT 2019 to 07 NOV 2019

SW-1, 10 OCT 2019 to 07 NOV 2019

ELEV 5434	<b>D</b>	TDZE 5370
-----------	----------	-----------

HIRL all Rwys  
TDZ/CL Rwys 7, 16L, 16R, 17R, 26, 34L, 34R, 35L, 35R



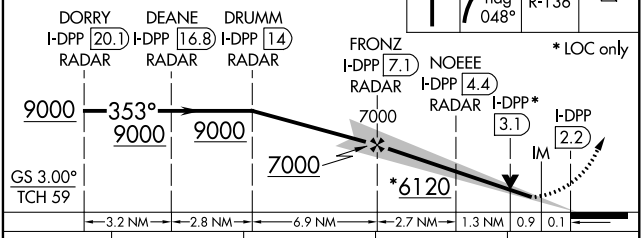
FAF to MAP 4.9 NM					
Knots	60	90	120	150	180
Min:Sec	4:54	3:16	2:27	1:58	1:38

SEE INSET FOR ROUTING TO DORRY

(IF) DORRY I-DPP [20.1] RADAR

6569 **△**

VGSI and ILS glidepath not coincident (VGSI Angle 3.00/TCH 66).



CATEGORY	A	B	C	D
S-ILS 35R	5570/18 200 (200-½)			
S-LOC 35R	5740/24	370 (400-½)	5740/35	370 (400-¾)