

LOC/DME I-DZG <b>111.55</b> Chan <b>52(Y)</b>	APP CRS <b>082°</b>	Rwy Idg TDZE <b>5352</b> Apt Elev <b>5434</b>	<b>12000</b>
---	------------------------	---	--------------

# ILS or LOC RWY 7

DENVER INTL (DEN)

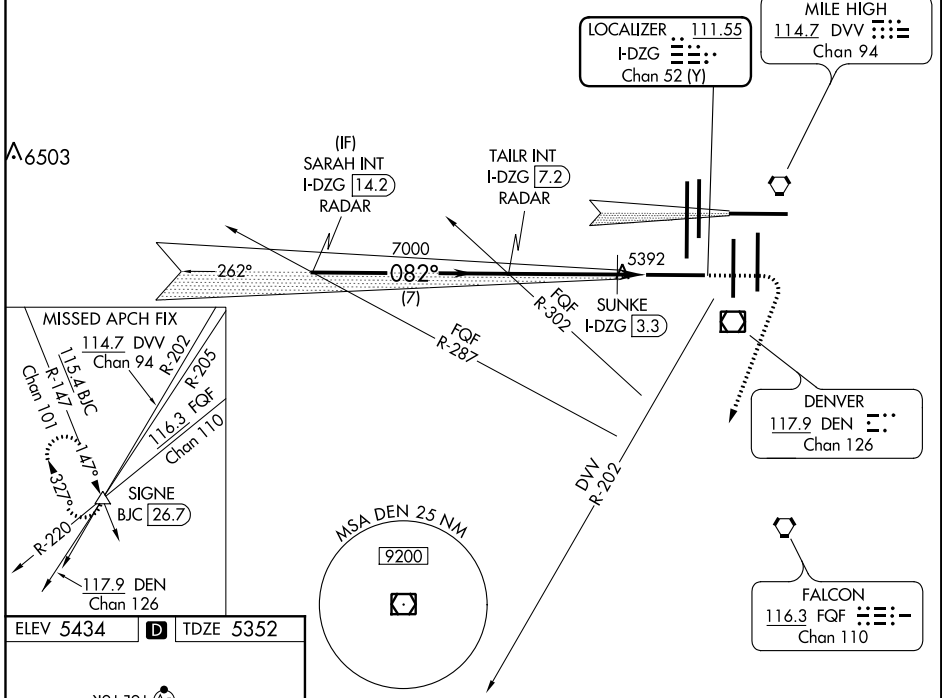
Simultaneous approach authorized with Rwy 8.  
For inoperative ALS, increase SUNKE FIX Cat C/D visibility to RVR 4500.



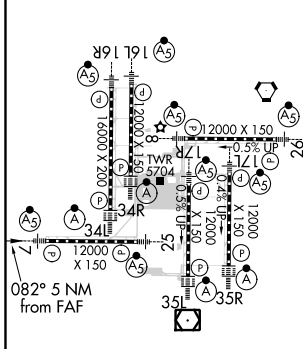
MISSED APPROACH: Climb to 5900, then climbing right turn to 11000 on heading 193° and on DVV VORTAC R-202 to SIGNE INT/BJC 26.7 DME and hold.

D-ATIS ARR <b>125.6 379.9</b> DEP <b>134.025</b>	DENVER APP CON <b>119.3 307.3 120.35 379.3</b> (NORTH) (SOUTH)	DENVER TOWER <b>128.75 273.55</b>	GND CON <b>127.5 379.175</b>	CLNC DEL <b>118.75</b>	CPDLC
--	---	--------------------------------------	---------------------------------	---------------------------	-------

## RADAR REQUIRED



ELEV 5434	D	TDZE 5352
-----------	---	-----------



TDZ/CL Rwys 7, 16L, 16R, 17R, 26, 34L, 34R, 35L, 35R					
HIRL all Rwys					
FAF to MAP 5 NM					
Knots	60	90	120	150	180
Min:Sec	5:00	3:20	2:30	2:00	1:40

VGSI and ILS glidepath not coincident (VGSI Angle 3.00/TCH 68).				5900	11000	DVV	SIGNE
SARAH INT I-DZG 14.2 RADAR				TAILR INT I-DZG 7.2 RADAR		R-202	△
9000				7000		*LOC only	
GS 3.00° TCH 55				7000		*5740	
7 NM				3.9 NM		1.1 NM	
CATEGORY	A	B	C	D			
S-ILS 7	5552/18			200 (200-½)			
S-LOC 7	5740/24	388 (400-½)		5740/35			388 (400-¾)
SUNKE FIX MINIMUMS							
S-LOC 7	5660/24			308 (300-½)			

SW-1, 10 OCT 2019 to 07 NOV 2019

SW-1, 10 OCT 2019 to 07 NOV 2019