

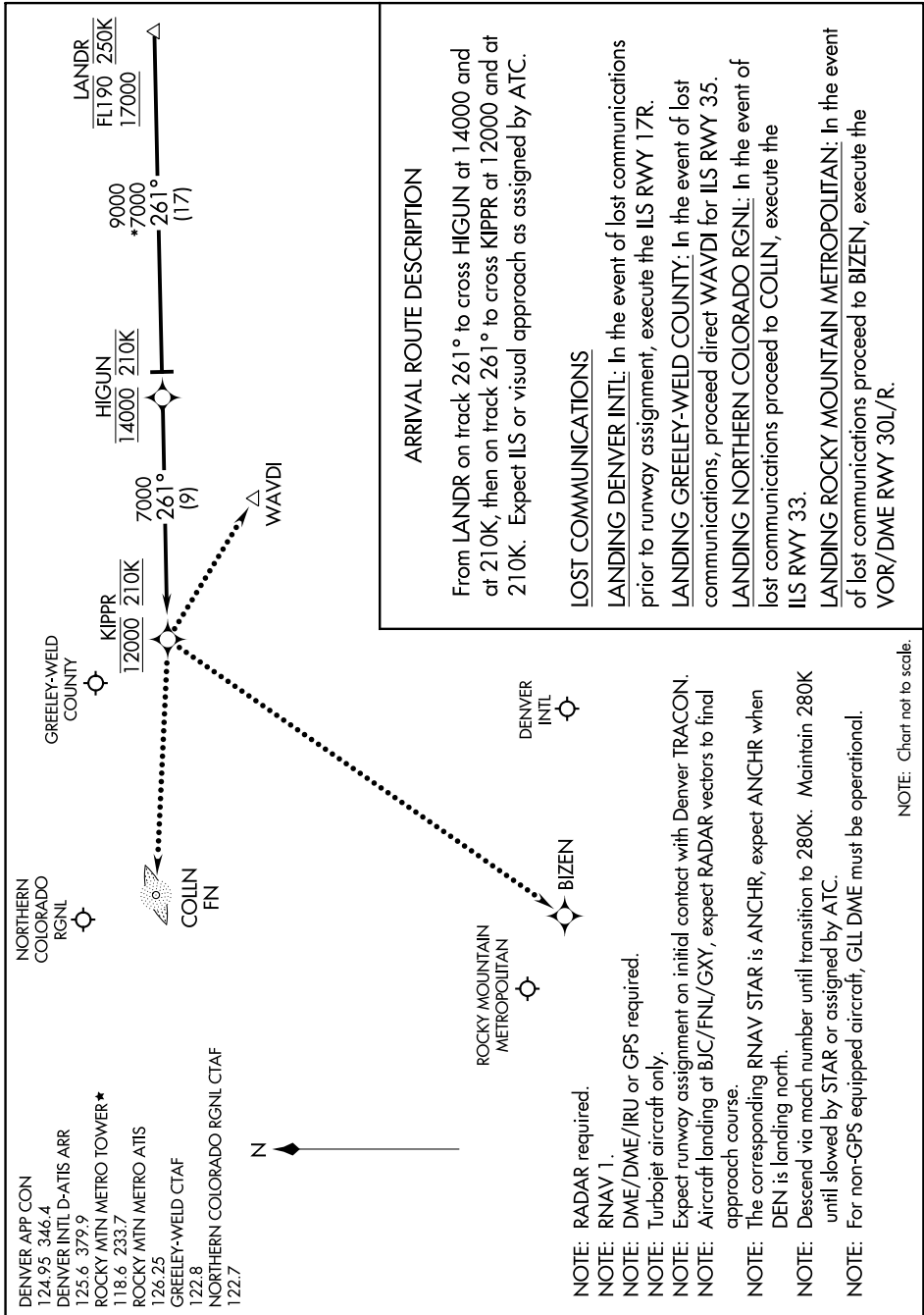
KIPPR FIVE ARRIVAL (RNAV)

Arrival Route

AL-9077 (FAA)

DENVER, COLORADO

610Z AON ZD 01 614Z OCT 2019 11-MS



KIPPR FIVE ARRIVAL (RNAV)

Arrival Route

DENVER, COLORADO

ARRIVAL ROUTE DESCRIPTION

From LANDR on track 261° to cross HIGUIN at 14000 and at 210K, then on track 261° to cross KIPPR at 12000 and at 210K. Expect ILS or visual approach as assigned by ATC.

LOST COMMUNICATIONS

- LANDING DENVER INTL:** In the event of lost communications prior to runway assignment, execute the ILS RWY 17R.
- LANDING GREELEY-WELD COUNTY:** In the event of lost communications, proceed direct WAYDI for ILS RWY 35.
- LANDING NORTHERN COLORADO RGNL:** In the event of lost communications proceed to COLLN, execute the ILS RWY 33.
- LANDING ROCKY MOUNTAIN METROPOLITAN:** In the event of lost communications proceed to BIZEN, execute the VOR/DME RWY 30L/R.

NOTE: Chart not to scale.

SW-1, 10 OCT 2019 to 07 NOV 2019