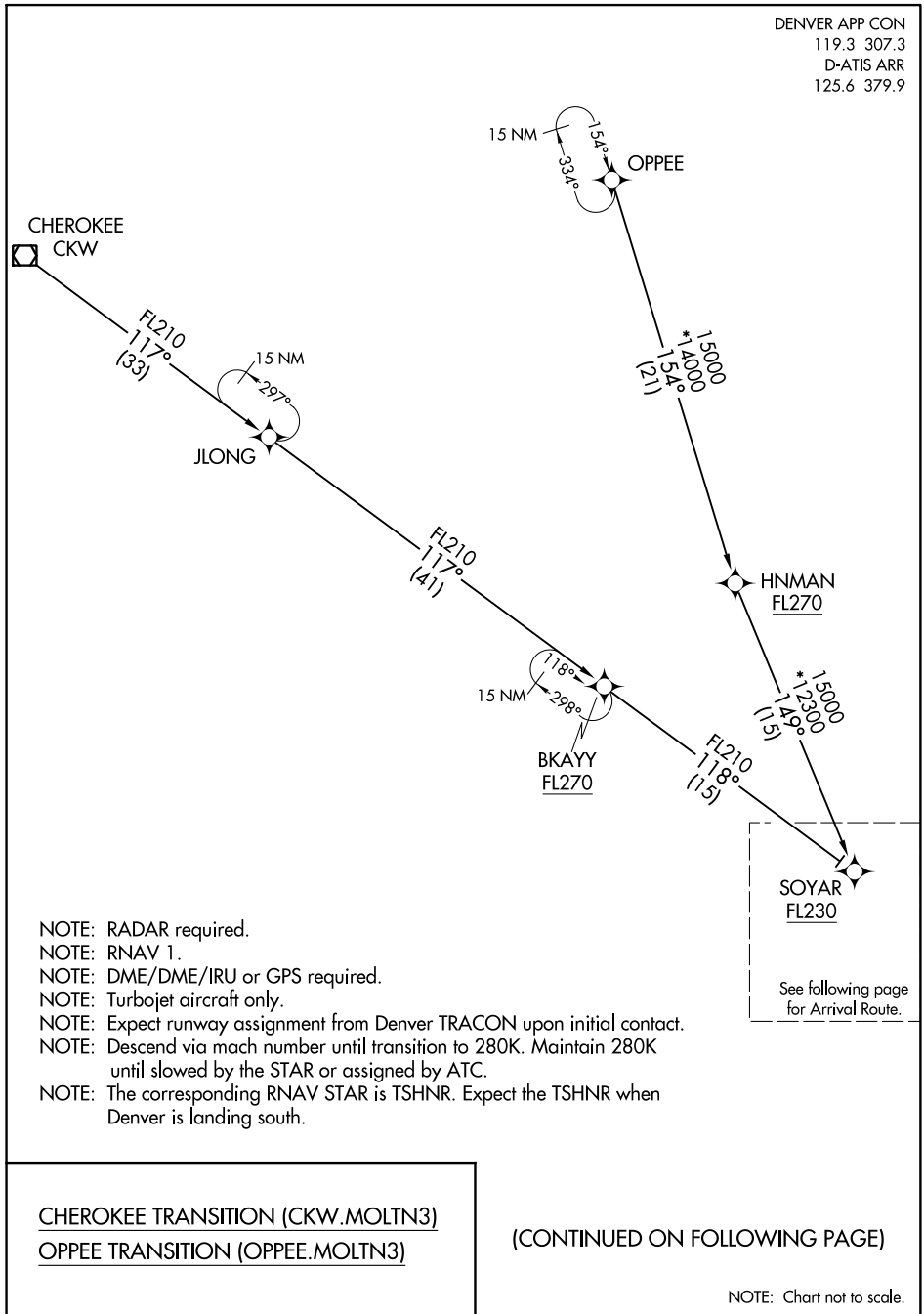


DENVER APP CON
119.3 307.3
D-ATIS ARR
125.6 379.9



SW-1, 10 OCT 2019 to 07 NOV 2019

SW-1, 10 OCT 2019 to 07 NOV 2019

- NOTE: RADAR required.
- NOTE: RNAV 1.
- NOTE: DME/DME/IRU or GPS required.
- NOTE: Turbojet aircraft only.
- NOTE: Expect runway assignment from Denver TRACON upon initial contact.
- NOTE: Descend via mach number until transition to 280K. Maintain 280K until slowed by the STAR or assigned by ATC.
- NOTE: The corresponding RNAV STAR is TSHNR. Expect the TSHNR when Denver is landing south.

See following page for Arrival Route.

CHEROKEE TRANSITION (CKW.MOLTN3)

OPPEE TRANSITION (OPPEE.MOLTN3)

(CONTINUED ON FOLLOWING PAGE)

NOTE: Chart not to scale.