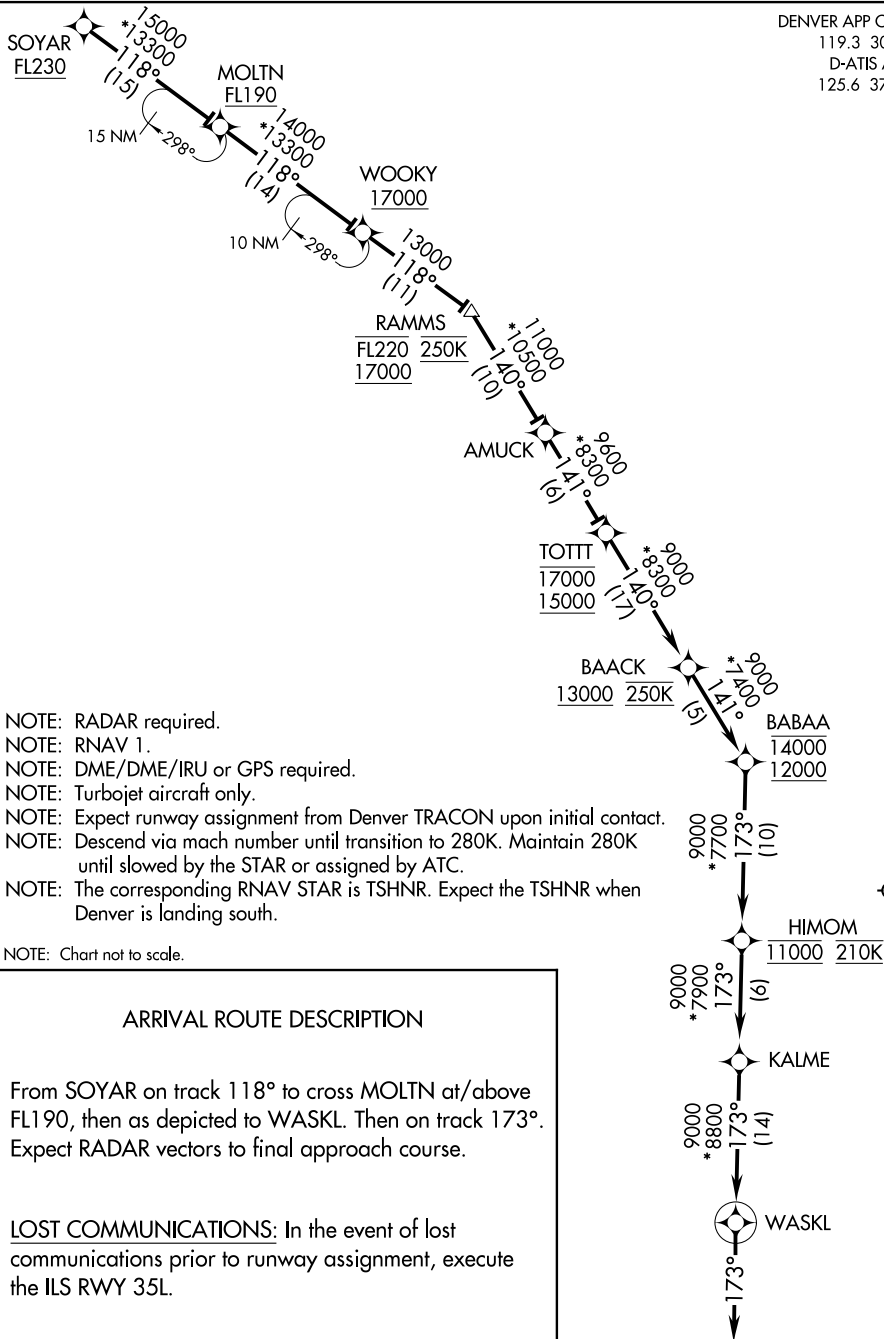


DENVER APP CON  
119.3 307.3  
D-ATIS ARR  
125.6 379.9



- NOTE: RADAR required.
- NOTE: RNAV 1.
- NOTE: DME/DME/IRU or GPS required.
- NOTE: Turbojet aircraft only.
- NOTE: Expect runway assignment from Denver TRACON upon initial contact.
- NOTE: Descend via mach number until transition to 280K. Maintain 280K until slowed by the STAR or assigned by ATC.
- NOTE: The corresponding RNAV STAR is TSHNR. Expect the TSHNR when Denver is landing south.

NOTE: Chart not to scale.

ARRIVAL ROUTE DESCRIPTION

From SOYAR on track 118° to cross MOLTN at/above FL190, then as depicted to WASKL. Then on track 173°. Expect RADAR vectors to final approach course.

LOST COMMUNICATIONS: In the event of lost communications prior to runway assignment, execute the ILS RWY 35L.

SW-1, 10 OCT 2019 to 07 NOV 2019

SW-1, 10 OCT 2019 to 07 NOV 2019