

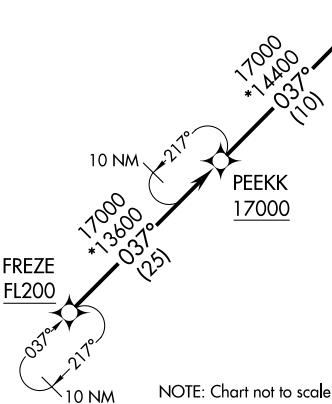
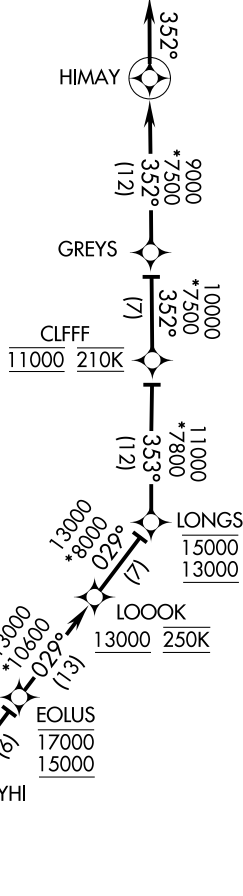
# PEEK THREE ARRIVAL(RNAV) Arrival Route

AL-9077 (FAA)

DENVER INTL (DEN)  
DENVER, COLORADO

DENVER APP CON  
120.35 379.3  
D-ATIS ARR  
125.6 379.9

- NOTE: RADAR required.
- NOTE: RNAV 1.
- NOTE: DME/DME/IRU or GPS required.
- NOTE: Turbojet aircraft only.
- NOTE: Expect runway assignment on initial contact with Denver TRACON.
- NOTE: Corresponding RNAV STAR is LDORA. Expect LDORA when Denver is landing north.
- NOTE: Descend via mach number until transition to 280K. Maintain 280K until slowed by STAR or assigned by ATC.



**ARRIVAL ROUTE DESCRIPTION**

From FREZE on track 037° to cross PEEKK at/above 17000, then as depicted to HIMAY, then on track 352°. Expect RADAR vectors to final approach course.

**LOST COMMUNICATIONS**

In the event of lost communications prior to runway assignment, execute the ILS RWY 16R.

SW-1, 10 OCT 2019 to 07 NOV 2019

SW-1, 10 OCT 2019 to 07 NOV 2019

# PEEK THREE ARRIVAL (RNAV) Arrival Route