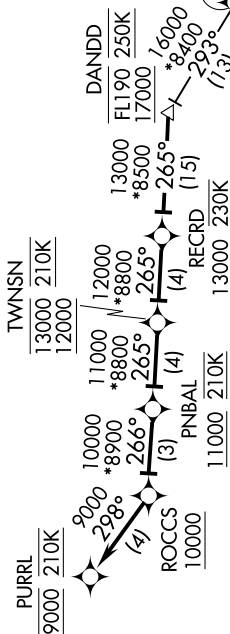


DENVER APP CON  
126.55 269.525  
D-ATIS ARR  
125.6 379.9



ARRIVAL ROUTE DESCRIPTION

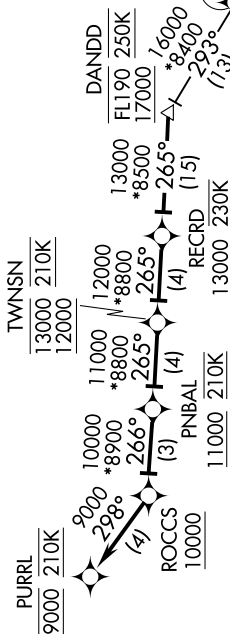
KLISS TRANSITION (KLISS.PURRL2)  
OATHE TRANSITION (OATHE.PURRL2)

From DANDD on track 265° to cross RECRD at/above 13000 and at 230K, then as depicted to PURRL. Expect ILS or visual approach as assigned by ATC.

LOST COMMUNICATIONS:

In the event of lost communications prior to runway assignment, execute the ILS RWY 35R approach.

DENVER APP CON  
126.55 269.525  
D-ATIS ARR  
125.6 379.9



ARRIVAL ROUTE DESCRIPTION

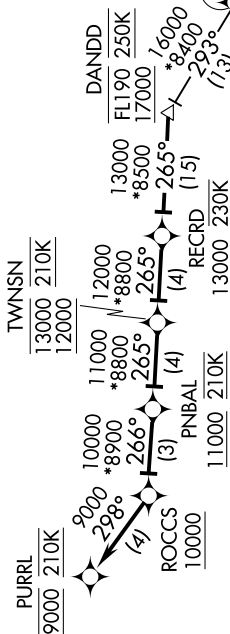
KLISS TRANSITION (KLISS.PURRL2)  
OATHE TRANSITION (OATHE.PURRL2)

From DANDD on track 265° to cross RECRD at/above 13000 and at 230K, then as depicted to PURRL. Expect ILS or visual approach as assigned by ATC.

LOST COMMUNICATIONS:

In the event of lost communications prior to runway assignment, execute the ILS RWY 35R approach.

DENVER APP CON  
126.55 269.525  
D-ATIS ARR  
125.6 379.9



ARRIVAL ROUTE DESCRIPTION

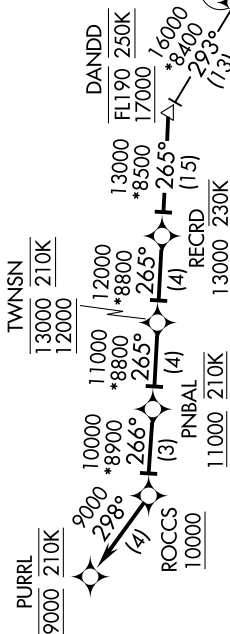
KLISS TRANSITION (KLISS.PURRL2)  
OATHE TRANSITION (OATHE.PURRL2)

From DANDD on track 265° to cross RECRD at/above 13000 and at 230K, then as depicted to PURRL. Expect ILS or visual approach as assigned by ATC.

LOST COMMUNICATIONS:

In the event of lost communications prior to runway assignment, execute the ILS RWY 35R approach.

DENVER APP CON  
126.55 269.525  
D-ATIS ARR  
125.6 379.9



NOTE: RADAR required.

NOTE: RNAV 1.

NOTE: DME/DME/IRU or GPS required.

NOTE: Turbojet aircraft only.

NOTE: Expect runway assignment from Denver TRACON upon initial contact.

NOTE: Corresponding RNAV STAR is JAGGR. Expect JAGGR when Denver is landing south.

NOTE: Descend via mach number until transition to 280K. Maintain 280K until slowed by STAR or as assigned by ATC.

NOTE: Chart not to scale.