


APP CRS 173°	Rwy Idg 16000 TDZE 5326 Apt Elev 5434
------------------------	--

RNAV (RNP) Z RWY 16R

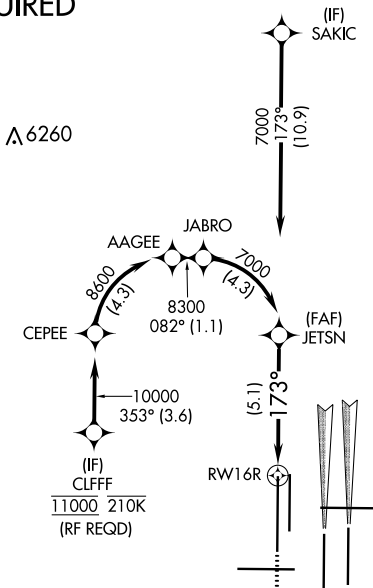
DENVER INTL (DEN)

GPS required. Simultaneous approach authorized.
For uncompensated Baro-VNAV systems, procedure NA below -25°C (-13°F) or above 46°C (116°F). Use of FD or AP providing RNAV track guidance required during simultaneous operations.

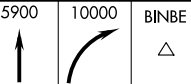
MALS
 MISSED APPROACH: Climb to 5900 then climbing right turn to 10000 direct BINBE and hold, continue climb-in-hold to 10000.

D-ATIS ARR 125.6 379.9 DEP 134.025	DENVER APP CON 119.3 307.3 120.35 379.3 (NORTH) (SOUTH)	DENVER TOWER 135.3 351.95	GND CON 127.5 379.175	CLNC DEL 118.75	CPDLC
--	--	-------------------------------------	---------------------------------	---------------------------	-------

RADAR REQUIRED



MISSED APCH FIX



VGSI and RNAV glidepath not coincident (VGSI Angle 3.00/TCH 71).

JETSN

7000

RWY 16R

173°

7000

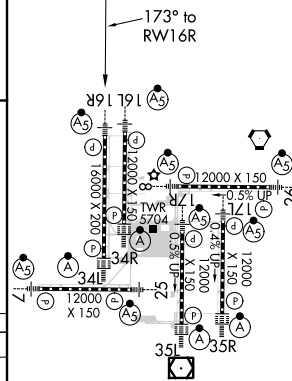
See planview for multiple IF locations.

GP 3.00°
TCH 55

CATEGORY	A	B	C	D
RNP 0.10 DA		5586/50	260 (200-1)	
RNP 0.30 DA		5651/50	325 (300-1)	

AUTHORIZATION REQUIRED

ELEV 5434 **D** TDZE 5326



HIRL all Rwys
TDZ/CL Rwys 7, 16L, 16R, 17R,
26, 34L, 34R, 35L, 35R

SW-1, 10 OCT 2019 to 07 NOV 2019

SW-1, 10 OCT 2019 to 07 NOV 2019