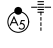


RNAV (RNP) Z RWY 17L

DENVER INTL (DEN)

APP CRS 173°	Rwy Idg 12000
	TDZE 5339
	Apt Elev 5434

▼ GPS required. For inoperative MALSR, increase RNP 0.10 all Cats visibility to RVR 4500 and RNP 0.30 all Cats visibility to RVR 6000. Simultaneous approach authorized. Use of FD or AP providing RNAV track guidance required during simultaneous operations. For uncompensated Baro-VNAV systems, procedure NA below -25°C (-13°F) or above 48°C (118°F).

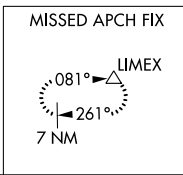
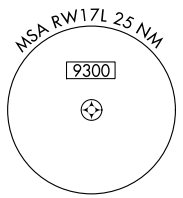
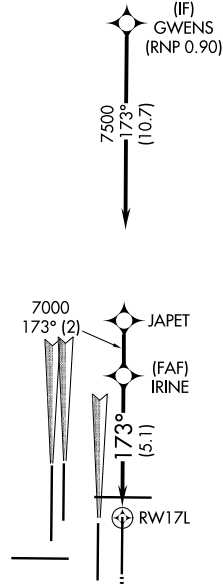
MALSR 

MISSED APPROACH: Climb to 5900 then climbing left turn to 10000 direct LIMEX and hold.

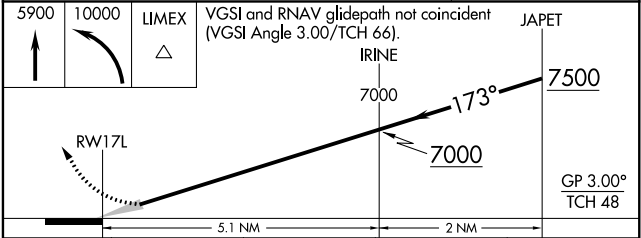
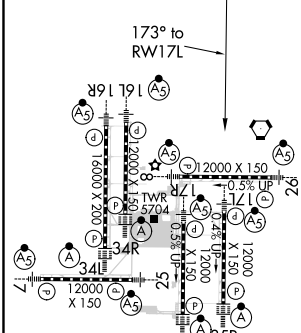
D-ATIS ARR 125.6 379.9 DEP 134.025	DENVER APP CON 119.3 307.3 (NORTH)	120.35 379.3 (SOUTH)	DENVER TOWER 132.35 239.275	GND CON 121.85 377.1	CLNC DEL 118.75	CPDLC
--	---	--------------------------------	---------------------------------------	--------------------------------	---------------------------	-------

RADAR REQUIRED

△ 6260



ELEV 5434	D	TDZE 5339
-----------	----------	-----------



CATEGORY	A	B	C	D
RNP 0.10 DA		5600/24	261 (200-½)	
RNP 0.30 DA		5716/40	377 (300-¾)	

AUTHORIZATION REQUIRED

HIRL all Rwys
TDZ/CL Rwys 7, 16L, 16R, 17R,
26, 34L, 34R, 35L, 35R

SW-1, 10 OCT 2019 to 07 NOV 2019

SW-1, 10 OCT 2019 to 07 NOV 2019