


APP CRS <b>263°</b>	Rwy Idg <b>12000</b>
TDZE <b>5355</b>	
Apt Elev <b>5434</b>	

# RNAV (RNP) Z RWY 25

DENVER INTL (DEN)

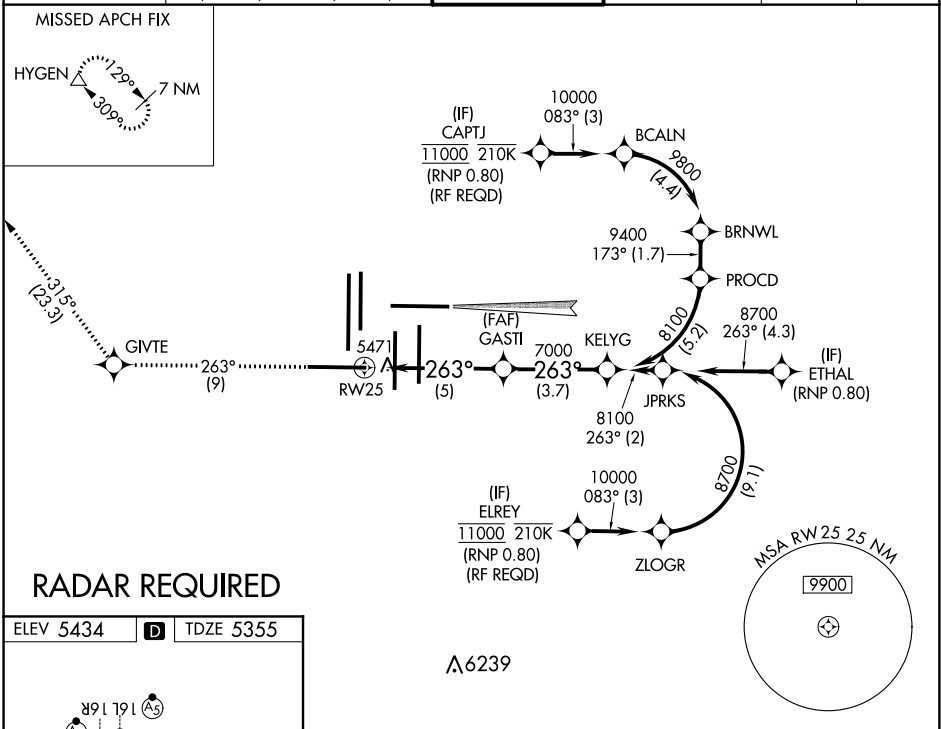
GPS required. For inoperative MALSR, increase RNP 0.10 all Cats visibility to RVR 6000 and RNP 0.30 all Cats visibility to 1 3/8 mile. Simultaneous approach authorized with Rwy 26, except for arrivals at CAPTJ and ELREY. Use of FD or AP providing RNAV track guidance required during simultaneous operations. For uncompensated Baro-VNAV systems, procedure NA below -25° (-13°F) or above 46°C (116°F).

**MALSR**



**MISSED APPROACH:** Climb to 10000 on track 263° to GIVTE and on track 315° to HYGEN and hold.

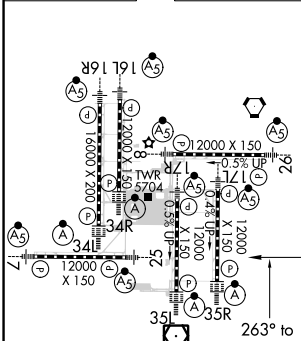
D-ATIS ARR <b>125.6 379.9</b> DEP <b>134.025</b>	DENVER APP CON <b>119.3 307.3 120.35 379.3</b> (NORTH) (SOUTH)	DENVER TOWER <b>128.75 273.55</b>	GND CON <b>127.5 379.175</b>	CLNC DEL <b>118.75</b>	CPDLC
--	--	--------------------------------------	---------------------------------	---------------------------	-------



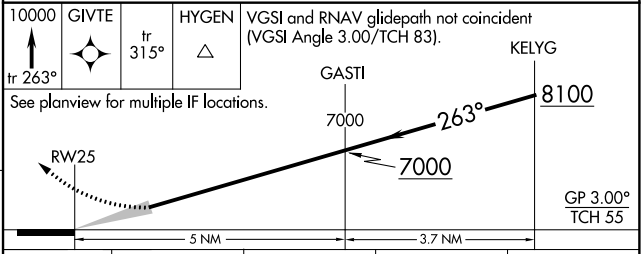
SW-1, 10 OCT 2019 to 07 NOV 2019

SW-1, 10 OCT 2019 to 07 NOV 2019

ELEV 5434	<b>D</b>	TDZE 5355
-----------	----------	-----------



HIRL all Rwys  
TDZ/CL Rwys 7, 16L, 16R, 17R,  
26, 34L, 34R, 35L, 35R



CATEGORY	A	B	C	D
RNP 0.10 DA		5743/40	388 (400-3/4)	
RNP 0.30 DA		5783/50	428 (400-1)	

## AUTHORIZATION REQUIRED