


APP CRS 263°	Rwy Idg 12000
	TDZE 5309
	Apt Elev 5434

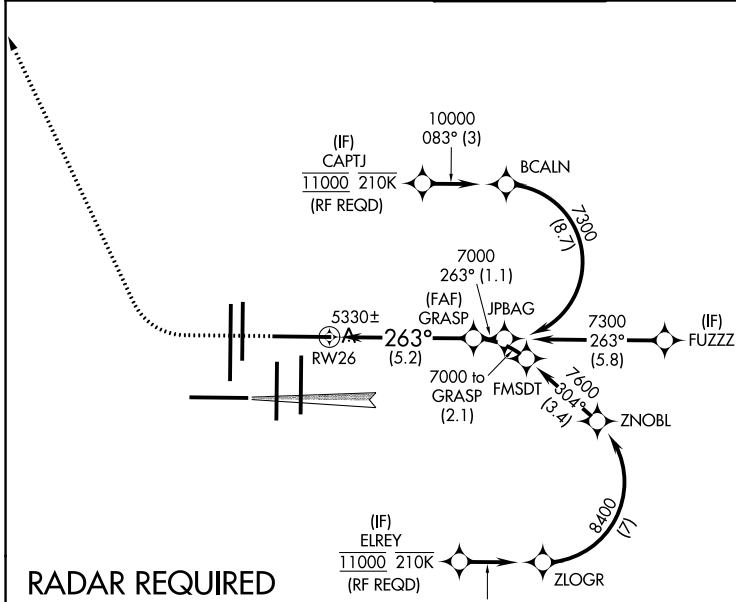
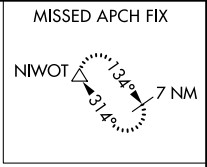
RNAV (RNP) Z RWY 26

DENVER INTL (DEN)

For uncompensated Baro-VNAV systems, procedure NA below -25°C (-13°F) or above 46°C (116°F). For inoperative MALSR, increase RNP 0.10 all Cats visibility to RVR 4500 and RNP 0.30 all Cats visibility to RVR 6000. Simultaneous approach authorized with Rwy 25, except for arrivals at CAPTJ and ELREY. Use of FD or AP providing RNAV track guidance required during simultaneous operations. GPS required.

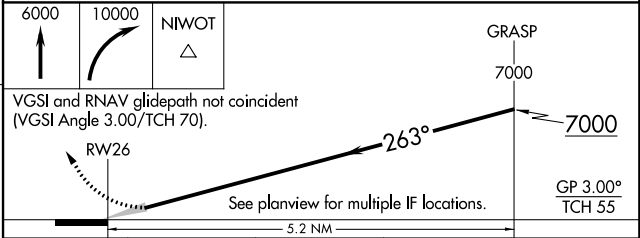
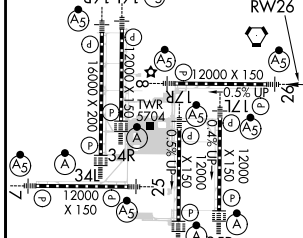
MALSRR

MISSED APPROACH:
 Climb to 6000 then climbing right turn to 10000 direct NIWOT and hold.

D-ATIS ARR 125.6 379.9 DEP 134.025	DENVER APP CON 119.3 307.3 (NORTH)	120.35 379.3 (SOUTH)	DENVER TOWER 132.35 239.275	GND CON 121.85 377.1	CLNC DEL 118.75	CPDLC
--	---	--------------------------------	---------------------------------------	--------------------------------	---------------------------	-------



RADAR REQUIRED

ELEV 5434	D	TDZE 5309
-----------	----------	-----------



CATEGORY	A	B	C	D
RNP 0.10 DA		5570/24	261 (200-½)	
RNP 0.30 DA		5668/40	359 (300-¾)	

AUTHORIZATION REQUIRED

SW-1, 10 OCT 2019 to 07 NOV 2019

SW-1, 10 OCT 2019 to 07 NOV 2019