


RNAV (RNP) Z RWY 35R

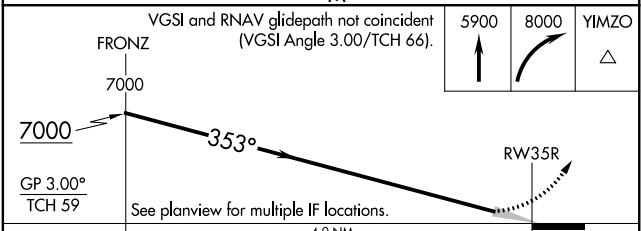
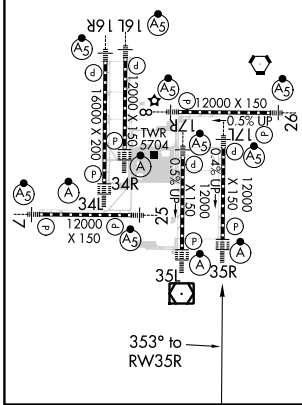
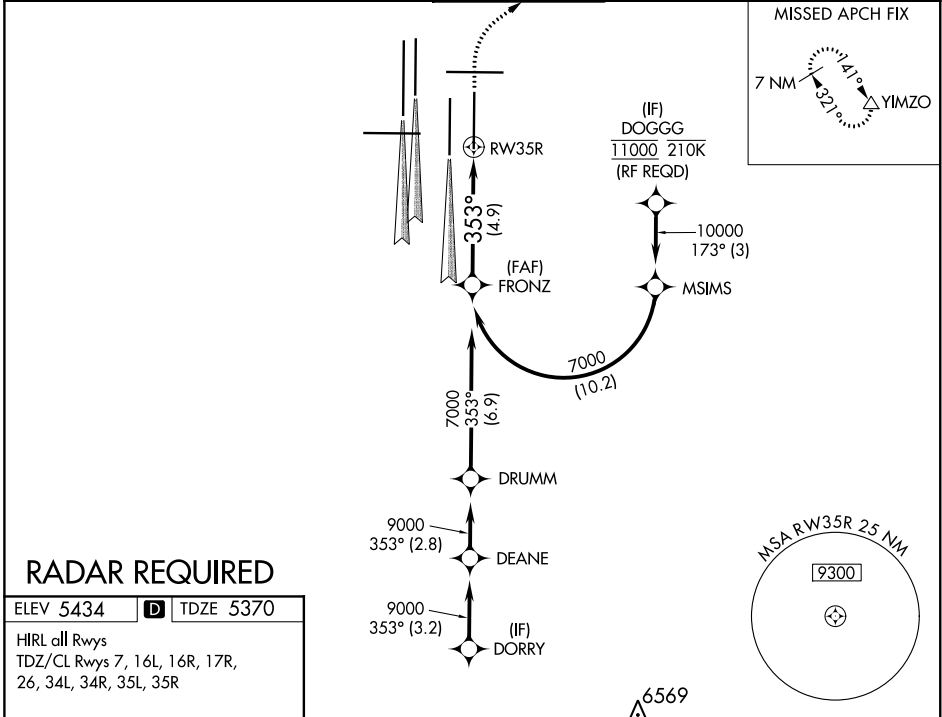
DENVER INTL (DEN)

| | | |
|-------------|----------|--------------|
| APP CRS | Rwy Idg | 12000 |
| 353° | TDZE | 5370 |
| | Apt Elev | 5434 |

▽ For uncompensated Baro-VNAV systems, procedure NA below -25°C (-13°F) or above 45°C (114°F). GPS required. For inoperative ALSF, increase RNP 0.10 all Cats visibility to RVR 4500 and RNP 0.30 all Cats visibility to RVR 5000. Simultaneous approach authorized. Use of FD or AP providing RNAV track required during simultaneous operations.

ALSF-2  MISSED APPROACH: Climb to 5900, then climbing right turn to 8000 direct YIMZO and hold.

| | | | | | |
|------------------------|--|-----------------------|---------------------|---------------|-------|
| D-ATIS | DENVER APP CON | DENVER TOWER | GND CON | CLNC DEL | CPDLC |
| ARR 125.6 379.9 | 119.3 307.3 120.35 379.3 (NORTH) (SOUTH) | 132.35 239.275 | 121.85 377.1 | 118.75 | |
| DEP 134.025 | | | | | |



| CATEGORY | A | B | C | D |
|-------------|---|---------|---------------|---|
| RNP 0.10 DA | | 5631/24 | 261 (200-1/2) | |
| RNP 0.30 DA | | 5702/32 | 332 (300-5/8) | |

AUTHORIZATION REQUIRED

SW-1, 10 OCT 2019 to 07 NOV 2019

SW-1, 10 OCT 2019 to 07 NOV 2019