

APP CRS	Rwy Idg	12000
082°	TDZE	5352
	Apt Elev	5434

RNAV (RNP) Z RWY 7

DENVER INTL (DEN)

GPS required. For inoperative MALSR, increase RNP 0.10 all Cats visibility to RVR 4500 and RNP 0.30 all Cats visibility to RVR 5000. Simultaneous approach authorized with Rwy 8, except for arrivals at BBOOK and BERNZ. Use of FD or AP providing RNAV track guidance required during simultaneous operations. For uncompensated Baro-VNAV systems, procedure NA below -25°C (-13°F) or above 46°C (116°F).

MALSR

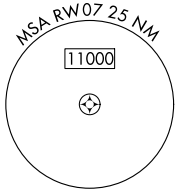
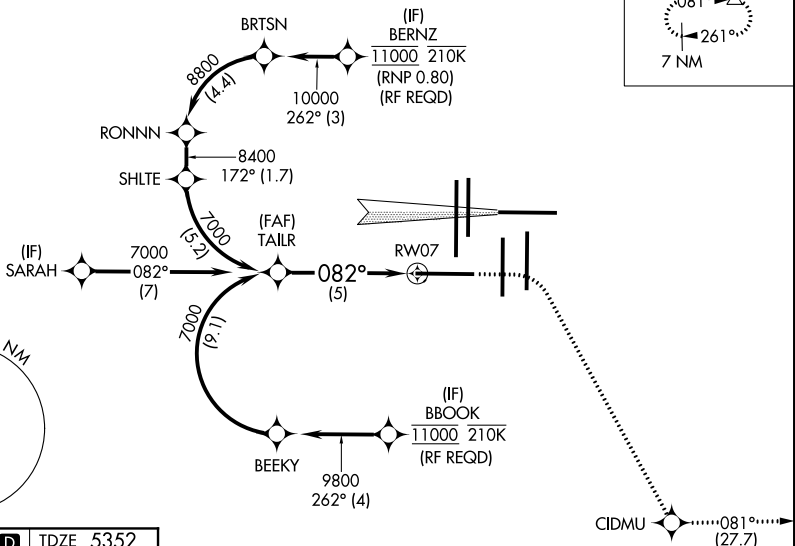


MISSED APPROACH: Climb to 5900 then climbing right turn to 10000 direct CIDMU and on track 081° to LIMEX and hold.

D-ATIS	DENVER APP CON	DENVER TOWER	GND CON	CLNC DEL	CPDLC
ARR 125.6 379.9	119.3 307.3 120.35 379.3 (NORTH) (SOUTH)	128.75 273.55	127.5 379.175	118.75	
DEP 134.025					

RADAR REQUIRED

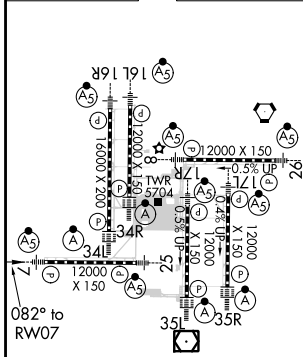
MISSED APCH FIX



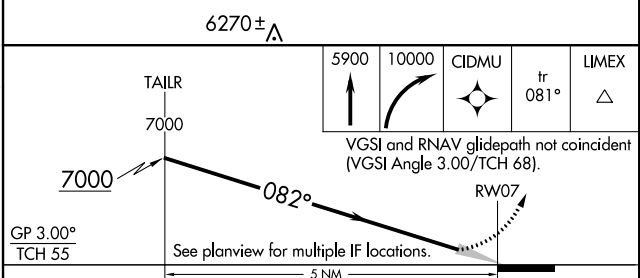
SW-1, 10 OCT 2019 to 07 NOV 2019

SW-1, 10 OCT 2019 to 07 NOV 2019

ELEV 5434	D	TDZE 5352
-----------	----------	-----------



HIRL all Rwys
TDZ/CL Rwys 7, 16L, 16R, 17R,
26, 34L, 34R, 35L, 35R



GP 3.00°	See planview for multiple IF locations.			
TCH 55	5 NM			
CATEGORY	A	B	C	D
RNP 0.10 DA		5619/24	267 (200-½)	
RNP 0.30 DA		5678/32	326 (300-⅔)	

AUTHORIZATION REQUIRED