

APP CRS <b>082°</b>	Rwy Idg <b>12000</b>
	TDZE <b>5354</b>
	Apt Elev <b>5434</b>

# RNAV (RNP) Z RWY 8

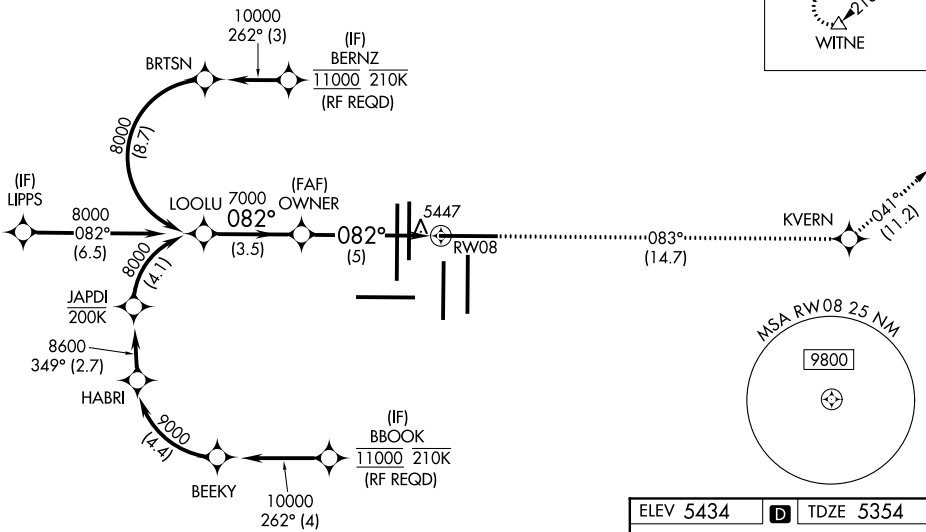
DENVER INTL (DEN)

**GPS required.** For inoperative MALSR, increase RNP 0.10 all Cats visibility to RVR 6000 and RNP 0.30 all Cats visibility to 1 $\frac{1}{2}$  mile. Simultaneous approach authorized with Rwy 7, except for arrivals at BERNZ and BBOOK. Use of FD or AP providing RNAV track guidance required during simultaneous operations. For uncompensated Baro-VNAV systems, procedure NA below -25°C (-13°F) or above 47°C (117°F).

**MALSR**  
  
**MISSED APPROACH:**  
 Climb to 10000 on track 083° to KVERN and on track 041° to WITNE and hold.

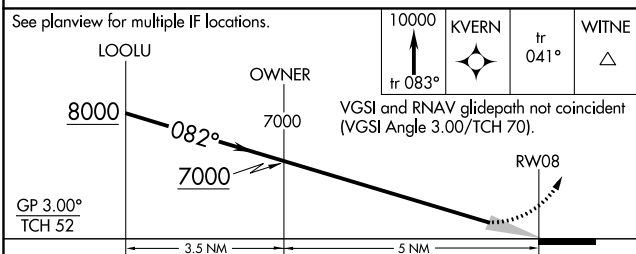
D-ATIS ARR <b>125.6 379.9</b> DEP <b>134.025</b>	DENVER APP CON <b>119.3 307.3</b> (NORTH)	DENVER TOWER <b>120.35 379.3</b> (SOUTH)	GND CON <b>121.85 377.1</b>	CLNC DEL <b>118.75</b>	CPDLC
--	---	--	--------------------------------	---------------------------	-------

## RADAR REQUIRED

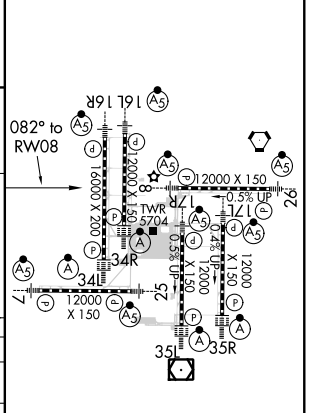


SW-1, 10 OCT 2019 to 07 NOV 2019

SW-1, 10 OCT 2019 to 07 NOV 2019



ELEV 5434	TDZE 5354
-----------	-----------



CATEGORY	A	B	C	D
RNP 0.10 DA		5727/40	373 (300-34)	
RNP 0.30 DA		5777/50	423 (400-1)	

## AUTHORIZATION REQUIRED

HIRL all Rwys  
 TDZ/CL Rwys 7, 16L, 16R, 17R,  
 26, 34L, 34R, 35L, 35R