

WAAS CH 93529 W17B	APP CRS 173°	Rwy Idg 12000 TDZE 5392 Apt Elev 5434
--	------------------------	--

RNAV (GPS) Y RWY 17R

DENVER INTL (DEN)

▽ For uncompensated Baro-VNAV systems, LNAV/VNAV NA below -25°C (-13°F) or above 46°C (116°F). Simultaneous approach authorized with Rwy 16L/16R and 17L. DME/DME RNP-0.3 NA. For inoperative MALS/R, increase LNAV/VNAV all Cats visibility to 1½ mile, and LNAV Cat C/D to 1¼ mile. LNAV procedure NA during simultaneous operations. Use of FD or AP providing RNAV track guidance required during simultaneous operations.

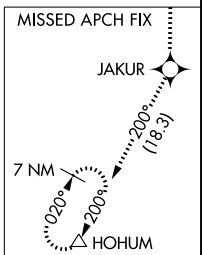
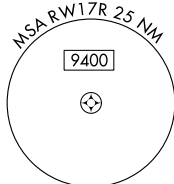
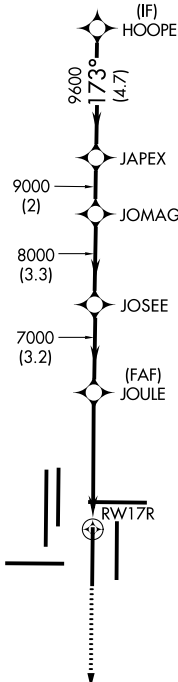
MALS/R

MISSED APPROACH: Climb to 10000 direct JAKUR and on track 200° to HOHUM and hold.

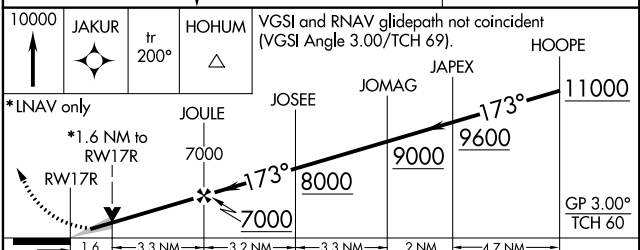
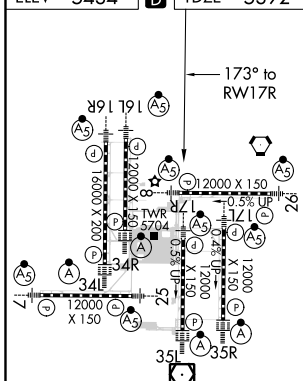
D-ATIS ARR 125.6 379.9 DEP 134.025	DENVER APP CON 119.3 307.3 (NORTH) 120.35 379.3 (SOUTH)	DENVER TOWER 133.3 322.45	GND CON 121.85 377.1	CLNC DEL 118.75	CPDLC
--	---	-------------------------------------	--------------------------------	---------------------------	-------

RADAR REQUIRED

△ 6260



ELEV 5434	D	TDZE 5392
------------------	----------	------------------



10000	JAKUR	tr 200°	HOHUM	VGSI and RNAV glidepath not coincident (VGSI Angle 3.00/TCH 69).				
*LNAV only		*1.6 NM to RWY17R		JOULE	JOSEE	JOMAG	JAPEX	HOOPE
CATEGORY		A	B	C	D			
LPV	DA	5592/18		200 (200-½)				
LNAV/VNAV	DA	5857/60		465 (500-1¼)				
LNAV	MDA	5940/24	548 (600-½)	5940-1¼		548 (600-1¼)		

HIRL all Rwys
TDZ/CL Rwys 7, 16L, 16R, 17R,
26, 34L, 34R, 35L, 35R

SW-1, 10 OCT 2019 to 07 NOV 2019

SW-1, 10 OCT 2019 to 07 NOV 2019