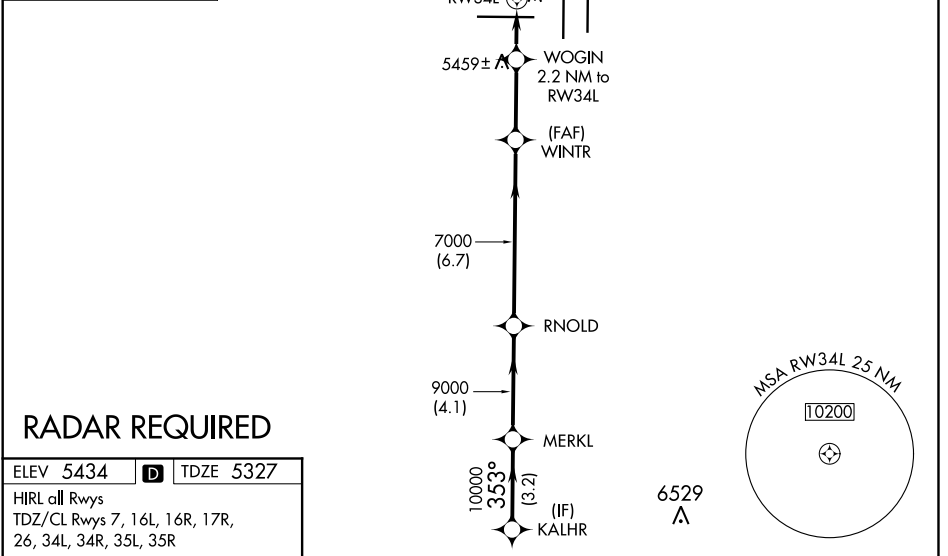
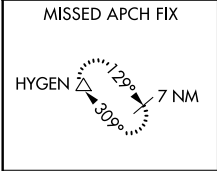


WAAS CH 45619 W34A	APP CRS 353°	Rwy Idg 16000 TDZE 5327 Apt Elev 5434
--	------------------------	--

RNAV (GPS) Y RWY 34L

DENVER INTL (DEN)

<p>▼ For uncompensated Baro-VNAV systems, LNAV/VNAV NA below -25°C (-13°F) or above 48°C (118°F). DME/DME RNP-0.3 NA. LNAV procedure NA during simultaneous operations. Simultaneous approach authorized with Rwy 35L/R. Use of FD or AP providing RNAV track guidance required during simultaneous operations.</p>		<p>ALSF-2</p>	<p>MISSED APPROACH: Climb to 5900 then climbing left turn to 10000 direct HYGEN and hold.</p>		
D-ATIS ARR 125.6 379.9 DEP 134.025	DENVER APP CON 119.3 307.3 (NORTH) 120.35 379.3 (SOUTH)	DENVER TOWER 135.3 351.95	GND CON 127.5 379.175	CLNC DEL 118.75	CPDLC



RADAR REQUIRED

ELEV 5434 **D** TDZE 5327

HIRL all Rwys
TDZ/CL Rwys 7, 16L, 16R, 17R, 26, 34L, 34R, 35L, 35R

353° to RWY 34L

KALHR		MERKL		RNOLD		WINTR		WOGIN		HYGEN	
10000		10000		9000		7000		7000		△	
GP 3.00°		353°		353°		353°		*6060		*LNAV only	
TCH 50		3.2 NM		4.1 NM		6.7 NM		2.2 NM to RWY 34L		*1 NM to RWY 34L	
CATEGORY	A	B		C		D					
LPV DA	DA	5527/18		200 (100-½)							
LNAV/VNAV DA	DA	5660/30		333 (300-⅝)							
LNAV MDA	MDA	5720/24		393 (300-½)		5720/35		393 (300-⅝)			

SW-1, 10 OCT 2019 to 07 NOV 2019

SW-1, 10 OCT 2019 to 07 NOV 2019