

| | | |
|--|------------------------|--|
| WAAS CH 82228 W08A | APP CRS 082° | Rwy Idg 12000 TDZE 5354 Apt Elev 5434 |
|--|------------------------|--|

RNAV (GPS) Y RWY 8

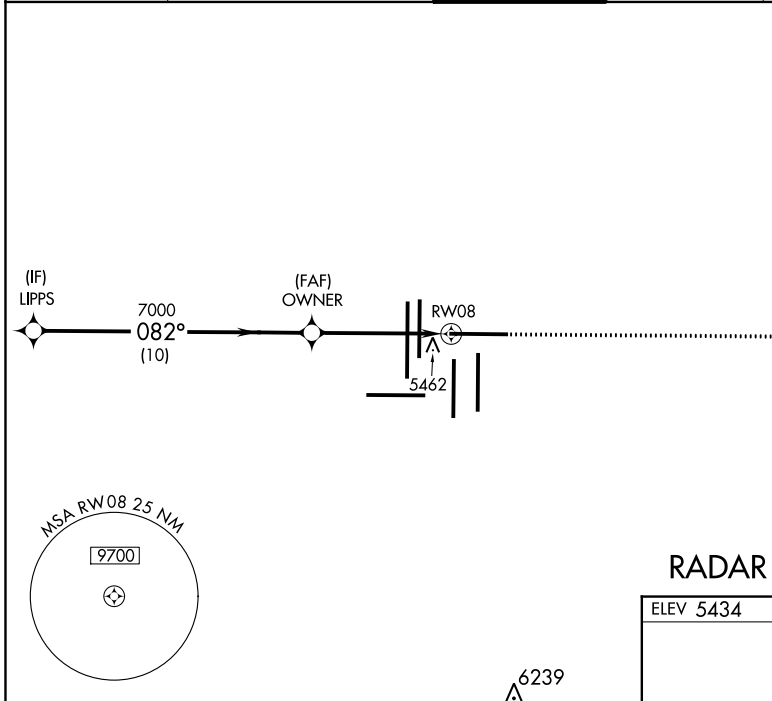
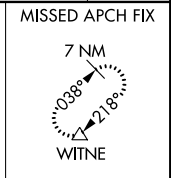
DENVER INTL (DEN)

▼ For uncompensated Baro-VNAV systems, LNAV/VNAV NA below -25°C (-13°F) or above 47°C (117°F). Simultaneous approach authorized with Rwy 7. DME/DME RNP-0.3 NA. LNAV procedure NA during simultaneous operations. Use of FD or AP providing RNAV track guidance required during simultaneous operations. For inoperative MALSR, increase LNAV Cat C/D visibility to RVR 5500. # RVR 1800 authorized with use of FD or AP or HUD to DA.



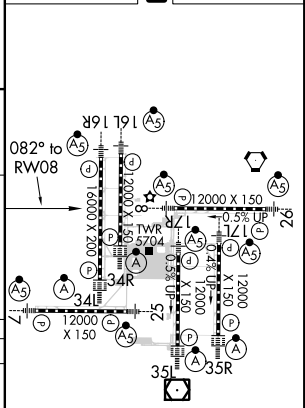
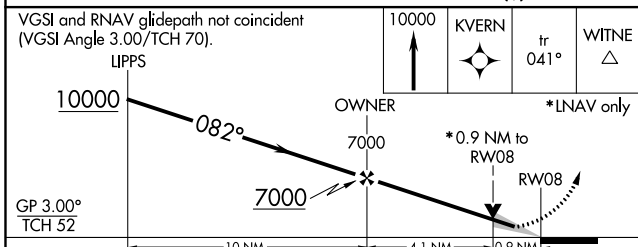
MISSED APPROACH: Climb to 10000 direct KVERN and on track 041° to WITNE and hold.

| | | | | | |
|--|--|---------------------------------------|--------------------------------|---------------------------|-------|
| D-ATIS ARR 125.6 379.9 DEP 134.025 | DENVER APP CON 119.3 307.3 120.35 379.3 (NORTH) (SOUTH) | DENVER TOWER 132.35 239.275 | GND CON 121.85 377.1 | CLNC DEL 118.75 | CPDLC |
|--|--|---------------------------------------|--------------------------------|---------------------------|-------|



RADAR REQUIRED

ELEV 5434 **D** TDZE 5354



| | | | | |
|--------------|---------------------|---|---------------------|---|
| CATEGORY | A | B | C | D |
| LPV DA # | 5554/24 | | 200 (200-½) | |
| LNAV/VNAV DA | 5833/60 | | 479 (400-1¼) | |
| LNAV MDA | 5720/24 366 (300-½) | | 5720/35 366 (300-⅝) | |

HIRL all Rwys
TDZ/CL Rwys 7, 16L, 16R, 17R,
26, 34L, 34R, 35L, 35R

SW-1, 10 OCT 2019 to 07 NOV 2019

SW-1, 10 OCT 2019 to 07 NOV 2019