

# SOLAR FOUR DEPARTURE (RNAV)

AL-9077 (FAA)

DENVER INTL (DEN)  
DENVER, COLORADO

NOTE: DME/DME/IRU or GPS required.

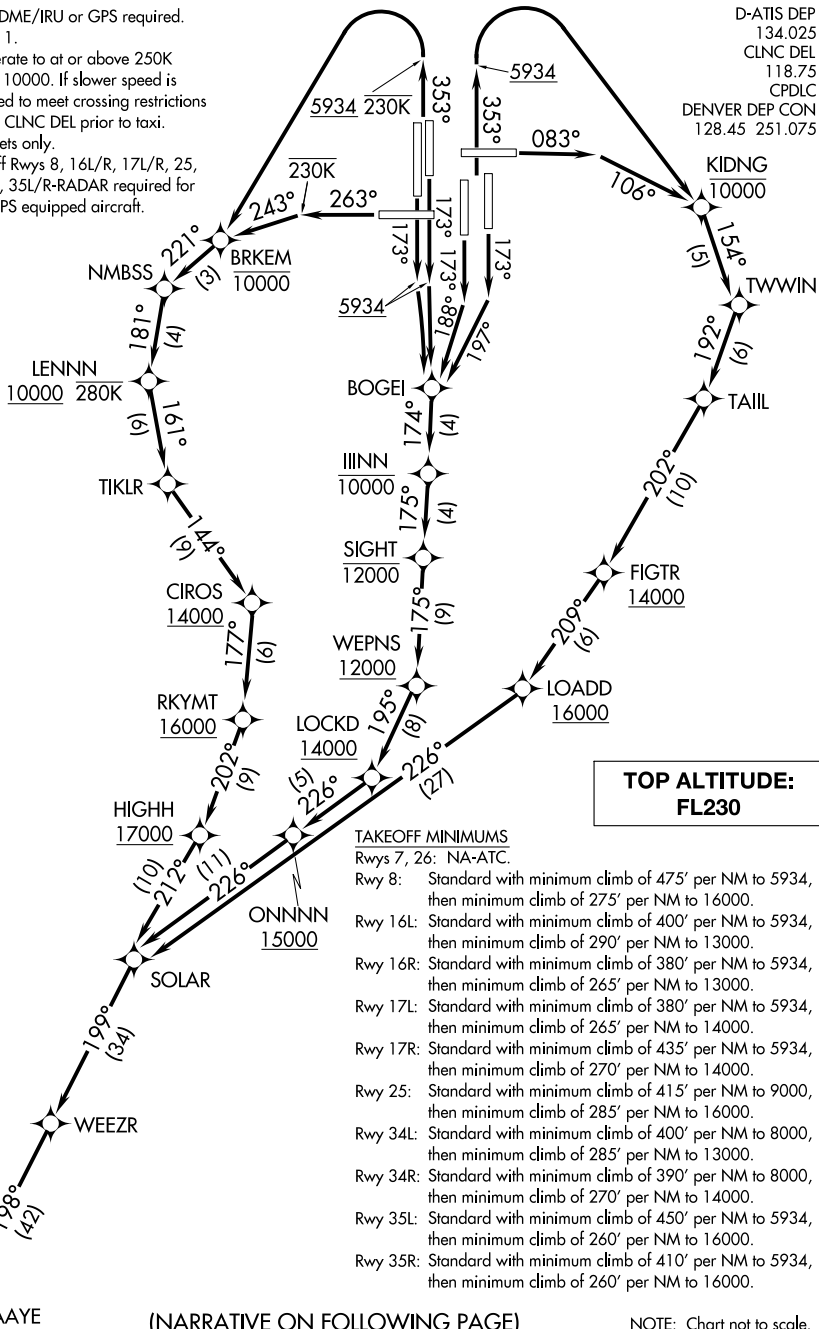
NOTE: RNAV 1.

NOTE: Accelerate to at or above 250K above 10000. If slower speed is required to meet crossing restrictions advise CLNC DEL prior to taxi.

NOTE: Turbojets only.

NOTE: Takeoff Rwy 8, 16L/R, 17L/R, 25, 34L/R, 35L/R-RADAR required for non-GPS equipped aircraft.

D-ATIS DEP  
134.025  
CLNC DEL  
118.75  
CPDLC  
DENVER DEP CON  
128.45 251.075



SW-1, 10 OCT 2019 to 07 NOV 2019

SW-1, 10 OCT 2019 to 07 NOV 2019

(NARRATIVE ON FOLLOWING PAGE)

NOTE: Chart not to scale.

# SOLAR FOUR DEPARTURE (RNAV)

(SOLAR4.DAAYE) 13SEP18

DENVER, COLORADO  
DENVER INTL (DEN)