

WAHUU TWO ARRIVAL (RNAV) Transition Routes

6102 AON Z0 01 6102 LCO 01 1-MS

NOTE: RADAR required.

NOTE: RNAV 1.

NOTE: DME/DME/IRU or GPS required.

NOTE: Turbojet aircraft only.

NOTE: Expect runway assignment on initial contact with Denver TRACON.

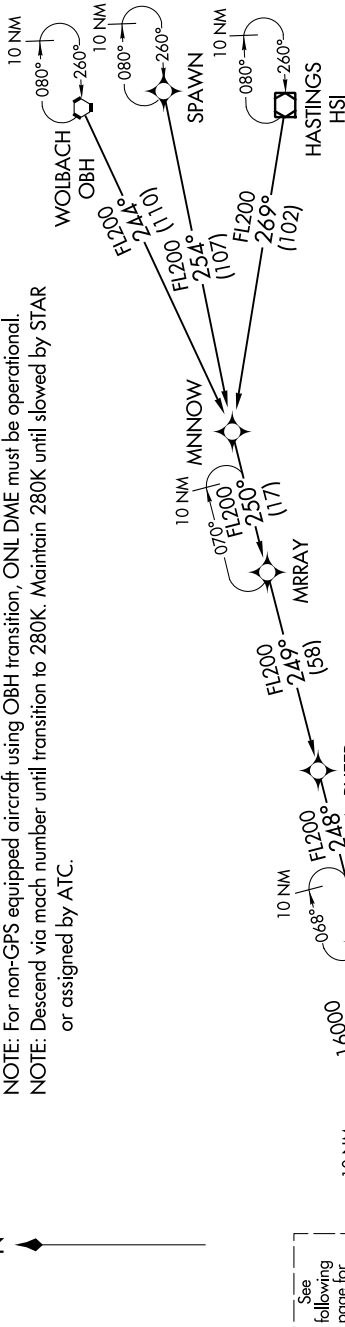
NOTE: The corresponding RNAV STAR is KOHOE. Expect KOHOE when DEN is landing north.

NOTE: For non-GPS equipped aircraft, BJC DME must be operational.

NOTE: For non-GPS equipped aircraft using OBH transition, ONL DME must be operational.

NOTE: Descend via mach number until transition to 280K. Maintain 280K until slowed by STAR or assigned by ATC.

DENVER APP CON
124.95 346.4
D-ATIS ARR
125.6 379.9



See following page for Arrival Route.

16000
*6900
248° (110)

SAYGE 17000
FL190 250K
17000

HASTINGS TRANSITION (HSI.WAHUU2)
SPAWN TRANSITION (SPAWN.WAHUU2)
WOLBACH TRANSITION (OBH.WAHUU2)

(CONTINUED ON FOLLOWING PAGE)

NOTE: Chart not to scale.

WAHUU TWO ARRIVAL (RNAV) Transition Routes