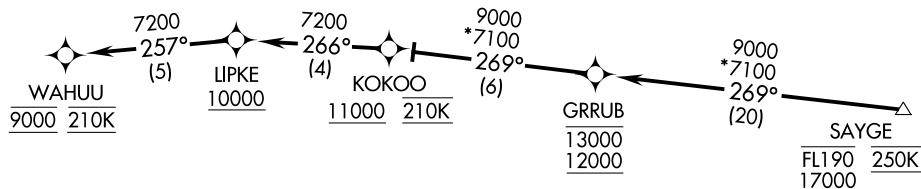


DENVER APP CON
124.95 346.4
D-ATIS ARR
125.6 379.9



SW-1, 10 OCT 2019 to 07 NOV 2019

SW-1, 10 OCT 2019 to 07 NOV 2019

NOTE: RADAR required.

NOTE: RNAV 1.

NOTE: DME/DME/IRU or GPS required.

NOTE: Turbojet aircraft only.

NOTE: Expect runway assignment on initial contact with Denver TRACON.

NOTE: The corresponding RNAV STAR is KOHOE. Expect KOHOE when DEN is landing north.

NOTE: For non-GPS equipped aircraft, BJC DME must be operational.

NOTE: Descend via mach number until transition to 280K. Maintain 280K until slowed by STAR or assigned by ATC.

NOTE: Chart not to scale.

ARRIVAL ROUTE DESCRIPTION

From SAYGE on track 269° to cross GRRUB at/above 12000 and at/below 13000, then as depicted to WAHUU. Expect ILS or visual approach as assigned by ATC.

LOST COMMUNICATIONS

In the event of lost communications prior to runway assignment, execute the ILS RWY 17R.