

YOKES SIX DEPARTURE (RNAV)

AL-9077 (FAA)

DENVER INTL (DEN)
DENVER, COLORADO

TAKEOFF MINIMUMS

Rwys 7, 26: NA-ATC.

Rwy 8: Standard with minimum climb of 400' per NM to 8000, then 285' per NM to 16000.

Rwys 16L/R: Standard with minimum climb of 400' per NM to 7000, then 260' per NM to 16000.

Rwy 17L: Standard with minimum climb of 400' per NM to 7000, then 220' per NM to 15000.

Rwy 17R: Standard with minimum climb of 455' per NM to 6500, then 220' per NM to 15000.

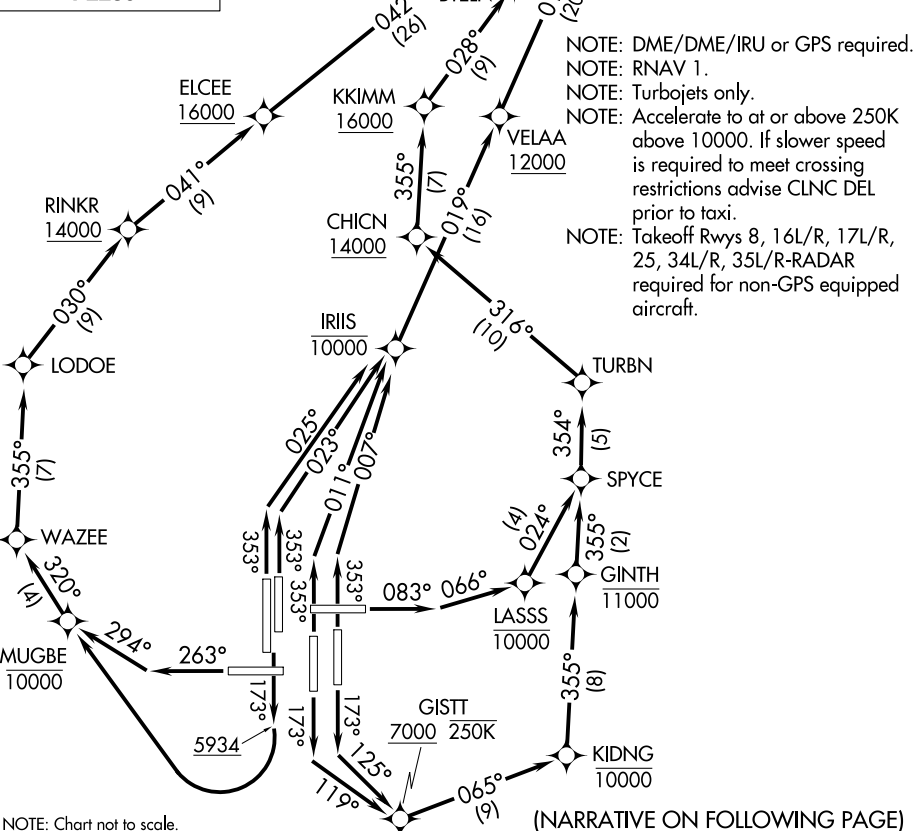
Rwy 25: Standard with minimum climb of 425' per NM to 8000, then 270' per NM to 15000.

Rwys 34L/R: Standard with minimum climb of 465' per NM to 7000, then 240' per NM to 12000.

Rwys 35L/R: Standard with minimum climb of 400' per NM to 7000, then 250' per NM to 12000.

D-ATIS DEP 134.025
CLNC DEL 118.75
CPDLC
DENVER DEP CON 127.05 363.25

**TOP ALTITUDE:
FL230**



NOTE: Chart not to scale.

(NARRATIVE ON FOLLOWING PAGE)

SW-1, 10 OCT 2019 to 07 NOV 2019

SW-1, 10 OCT 2019 to 07 NOV 2019

YOKES SIX DEPARTURE (RNAV)

(YOKES6.YOKES) 13SEP18

DENVER, COLORADO
DENVER INTL (DEN)