

| | | |
|-------------|----------|-------------|
| APP CRS | Rwy Idg | 6100 |
| 183° | TDZE | 2211 |
| | Apt Elev | 2211 |

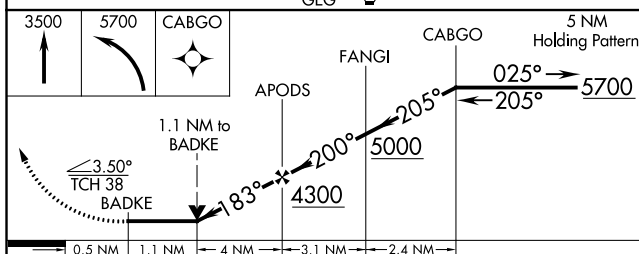
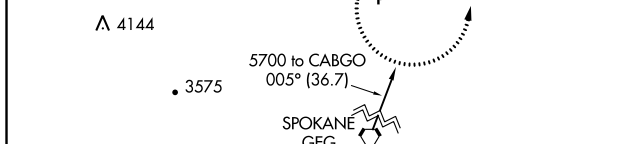
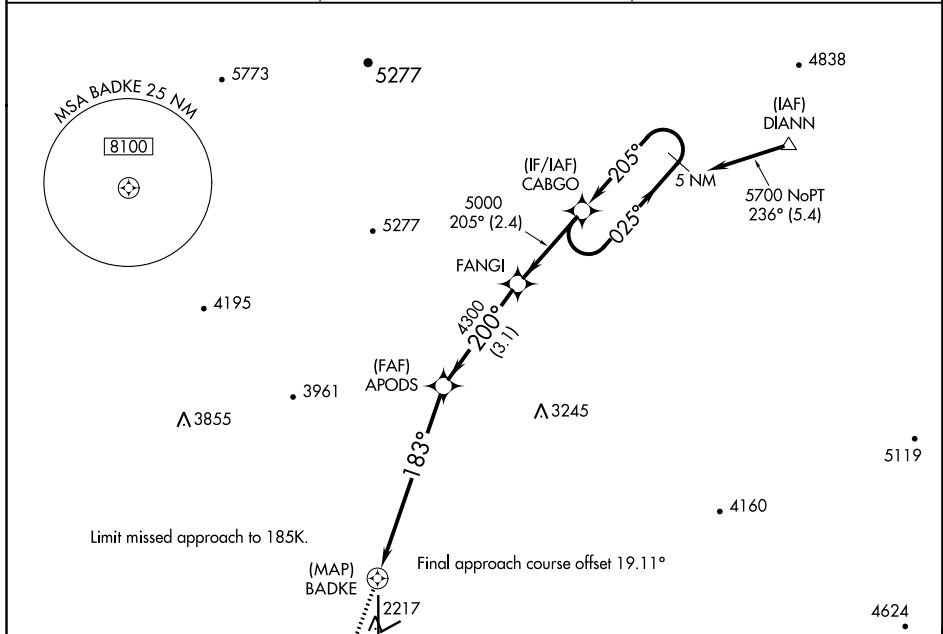
RNAV (GPS) RWY 16

DEER PARK (DEW)

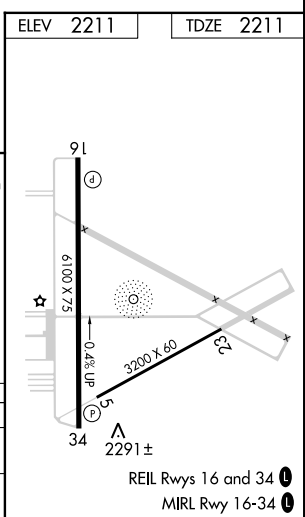
When local altimeter setting not received, procedure NA.
 DME/DME RNP-0.3 NA.
 Helicopter visibility reduction below 3/4 SM NA.
 Circling NA west of Rwy 16-34.

MISSED APPROACH: Climb to 3500 then climbing left turn to 5700 direct CABGO and hold.

| | | |
|------------------------|---|-------------------------------|
| ASOS 135.175 | SPOKANE APP CON 123.75 282.25 | UNICOM 123.0 (CTAF) |
|------------------------|---|-------------------------------|



| CATEGORY | A | B | C | D |
|----------|--------|-------------|-----------------|-----------------|
| LNVA MDA | 2640-1 | 429 (500-1) | 2640-1 1/4 | 429 (500-1 1/4) |
| CIRCLING | 2700-1 | 489 (500-1) | 2700-1 1/2 | 2860-2 |
| | | | 489 (500-1 1/2) | 649 (700-2) |



NW-1, 10 OCT 2019 to 07 NOV 2019

NW-1, 10 OCT 2019 to 07 NOV 2019