

APP CRS	Rwy Idg	4405
173°	TDZE	6
	Apt Elev	7

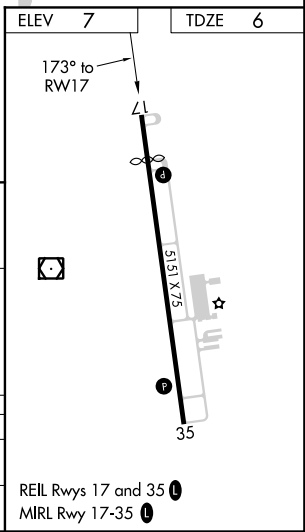
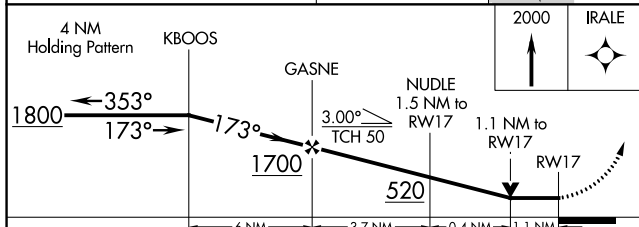
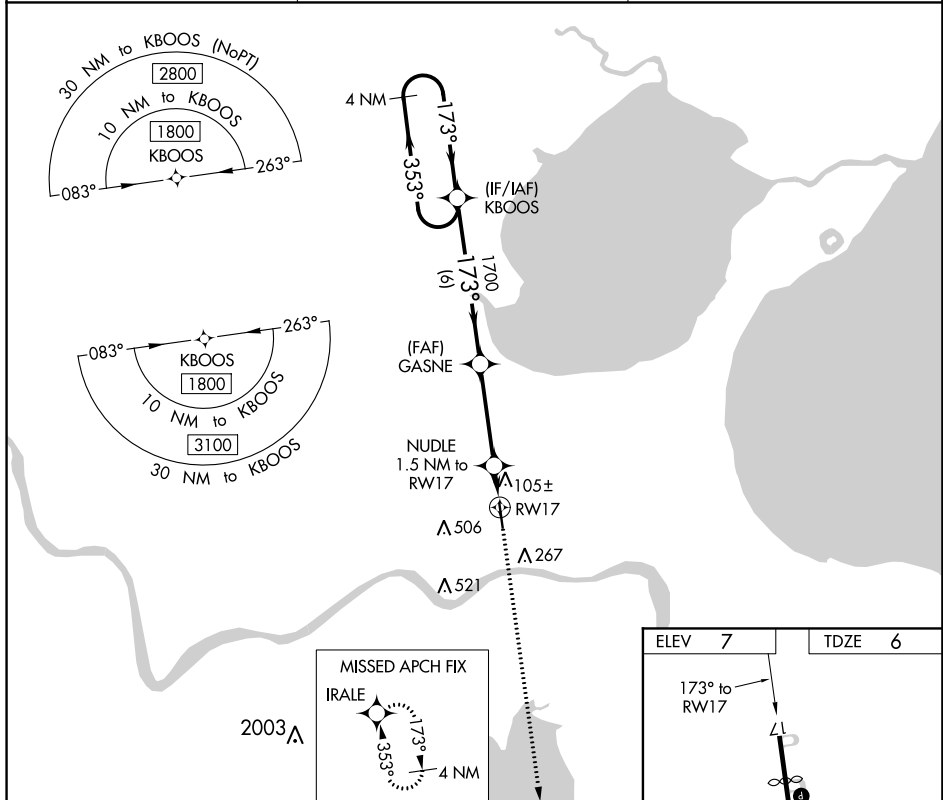
RNAV (GPS) RWY 17

PORT OF SOUTH LOUISIANA EXECUTIVE RGNL (APS)

⚠ Rwy 17 helicopter visibility reduction below 3/4 SM NA. DME/DME RNP-0.3 NA.
⚠ When local altimeter setting not received, use Louis Armstrong New Orleans Intl altimeter setting and increase all MDA 60 feet, increase LNAV Cat C visibility 1/4 SM. VDP NA when using Louis Armstrong New Orleans Intl altimeter setting.

MISSED APPROACH: Climb to 2000 direct IRALE and hold.

AWOS-3PT 125.45	NEW ORLEANS APP CON 125.5 350.35	UNICOM 122.7 (CTAF) 0
---------------------------	--	---------------------------------



CATEGORY	A	B	C	D
LNAV MDA	400-1	394 (400-1)	400-1 1/8 394 (400-1 1/8)	NA
C CIRCLING	700-1	693 (700-1)	820-2 1/2 813 (900-2 1/2)	NA

SC-4, 10 OCT 2019 to 07 NOV 2019

SC-4, 10 OCT 2019 to 07 NOV 2019