

VOR/DME RQR 110.8 Chan 45	APP CRS 335°	Rwy Idg 5151 TDZE 7 Apt Elev 7
---	------------------------	---

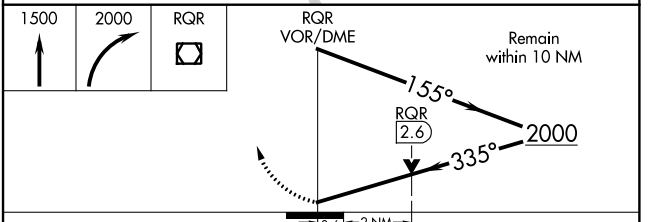
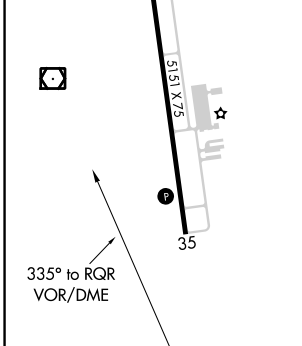
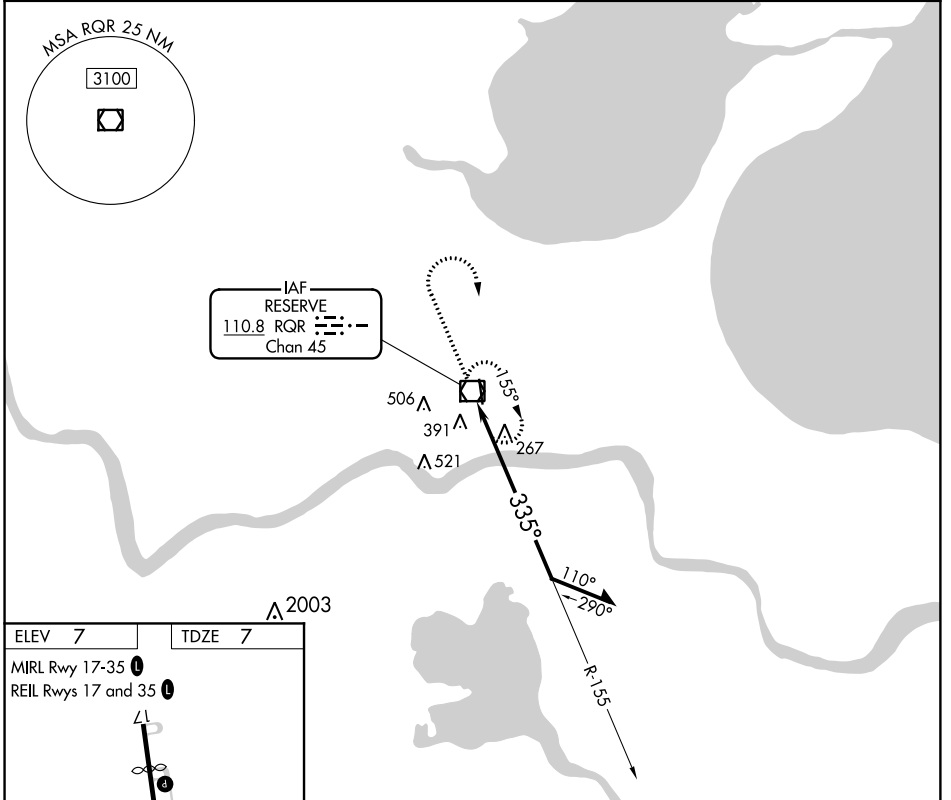
VOR RWY 35

PORT OF SOUTH LOUISIANA EXECUTIVE RGNL (APS)

⚠ Rwy 35 helicopter visibility reduction below 3/4 SM NA. When local altimeter setting not received, use Louis Armstrong New Orleans Intl altimeter setting and increase all MDA 60 feet, increase S-35 and Circling Cat B visibility 1/4 SM. VDP NA when using Louis Armstrong New Orleans Intl altimeter setting.

⚠ MISSED APPROACH: Climb to 1500 then climbing right turn to 2000 direct RQR VOR/DME and hold.

AWOS-3PT 125.45	NEW ORLEANS APP CON 125.5 350.35	UNICOM 122.7 (CTAF) 0
---------------------------	--	---------------------------------



CATEGORY	A	B	C	D
S-35	700-1	693 (700-1)	700-2 693 (700-2)	NA
C CIRCLING	700-1	693 (700-1)	820-2½ 813 (900-2½)	NA

VOR RWY 35

SC-4, 10 OCT 2019 to 07 NOV 2019

SC-4, 10 OCT 2019 to 07 NOV 2019