

WAAS CH <b>90437</b> <b>W32A</b>	APP CRS <b>317°</b>	Rwy Idg TDZE <b>1162</b> Apt Elev <b>1162</b>	<b>5005</b>
--	------------------------	---	-------------

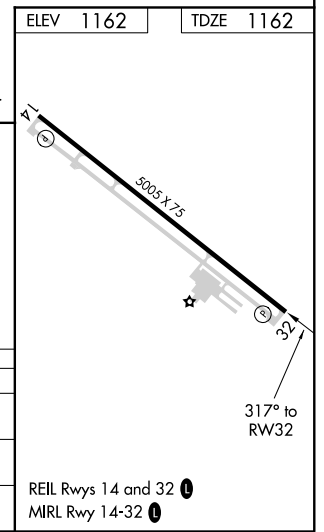
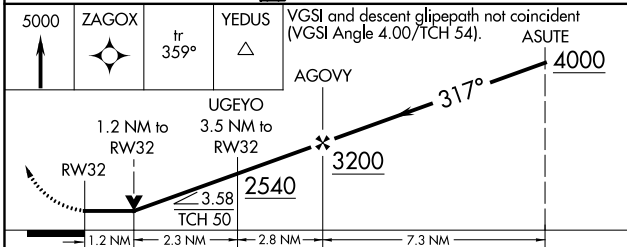
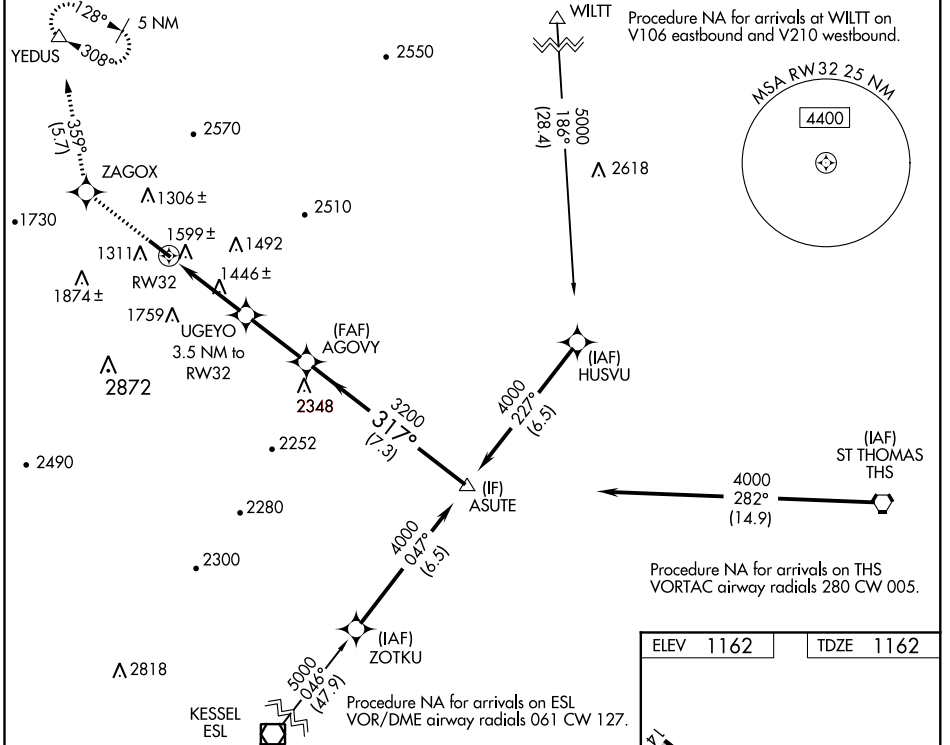
# RNAV (GPS) RWY 32

BEDFORD COUNTY (HMZ)

**NA** DME/DME RNP-0.3 NA. VDP NA when using Altoona altimeter setting. When local altimeter setting not received, use Altoona altimeter setting and increase all MDA 100 feet. Increase LP Cat C visibility 1/4 mile. Increase LNAV Cat B visibility 1/4 mile and Cat C visibility 1/2 mile. Increase Circling Cats A and B visibility 1/4 mile. Helicopter visibility reduction below 1/4 SM NA.

**MISSED APPROACH:** Climb to 5000 direct ZAGOX and on track 359° to YEDUS and hold, continue climb-in-hold to 5000.

AWOS-3 <b>123.675</b>	JOHNSTOWN APP CON ★ <b>121.2 299.2</b>	UNICOM <b>122.7 (CTAF) 0</b>
--------------------------	---	---------------------------------



CATEGORY	A	B	C	D
LP MDA	1740-1	578 (600-1)	1740-1½ 578 (600-1½)	NA
LNAV MDA	1860-1	698 (700-1)	1860-2 698 (700-2)	NA
<b>C</b> CIRCLING	1900-1 738 (800-1)	1960-1 798 (800-1)	2200-3 1038 (1100-3)	NA

NE-4, 10 OCT 2019 to 07 NOV 2019

NE-4, 10 OCT 2019 to 07 NOV 2019