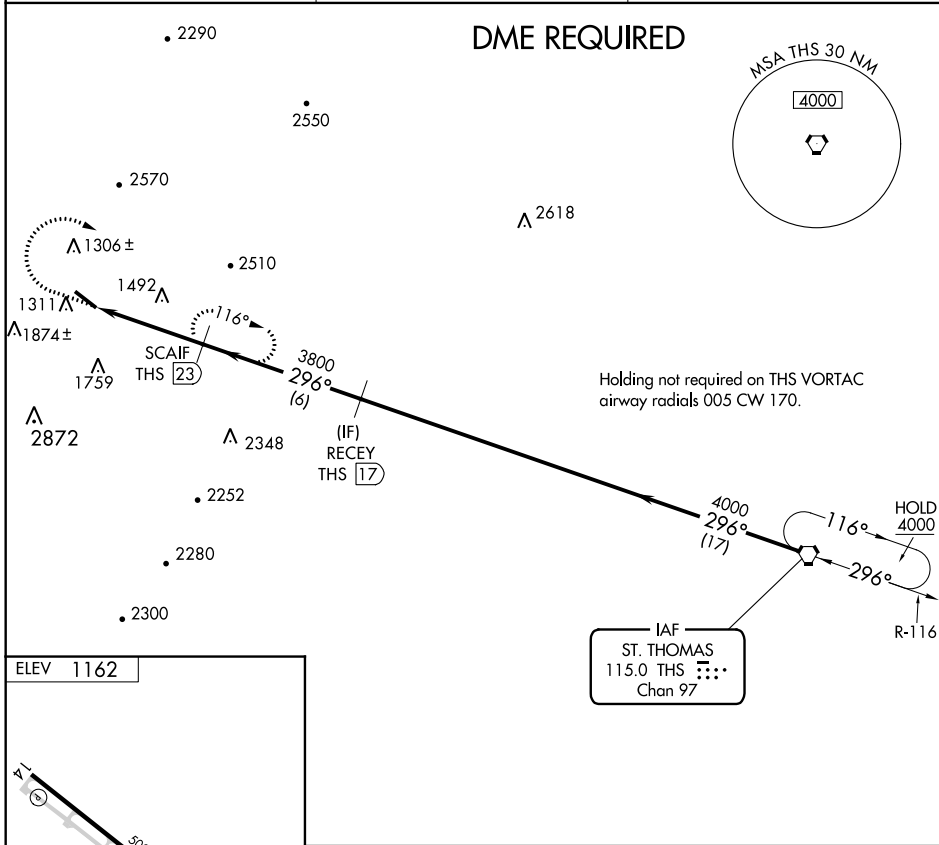


VORTAC THS 115.0 Chan 97	APP CRS 296°	Rwy Idg TDZE Apt Elev	N/A N/A 1162
--	------------------------	-----------------------------	---

VOR-A
BEDFORD COUNTY (HMZ)

<p>▽ Helicopter visibility reduction below 3/4 SM NA. ▲ DME required.</p>	<p>MISSED APPROACH: Climb to 3200 then climbing right turn to 4000 on heading 150° and on THS VORTAC R-296 to SCAIF/23 DME and hold.</p>
---	--

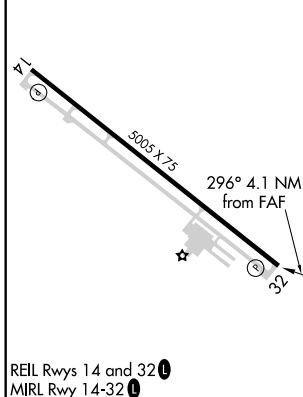
AWOS-3 123.675	JOHNSTOWN APP CON ★ 121.2 299.2	UNICOM 122.7 (CTAF) 0
--------------------------	---	---------------------------------



NE-4, 10 OCT 2019 to 07 NOV 2019

NE-4, 10 OCT 2019 to 07 NOV 2019

ELEV 1162



	3200	4000	THS R-296	SCAIF THS 23				
	↑	hdg 150°						
			THS 27.1	SCAIF THS 23	RECEY THS 17	THS VORTAC		
			3800	4000	4000	4000		
			4.1 NM	6 NM	17 NM			
			FAF to MAP 4.1 NM					
CATEGORY	A	B	C	D				
C CIRCLING	2700-1¼ 1538 (1600-1¼)	2700-1½ 1538 (1600-1½)	2700-3 1538 (1600-3)	2940-3 1778 (1800-3)				

	60	90	120	150	180
Knots	4:06	2:44	2:03	1:38	1:22
Min:Sec					