

NDB ROQ 368	APP CRS 177°	Rwy Idg TDZE Apt Elev	5000 297 311
-----------------------	------------------------	-----------------------------	---

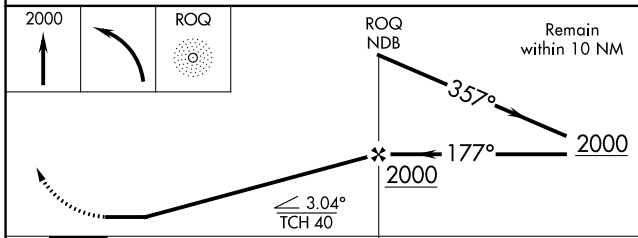
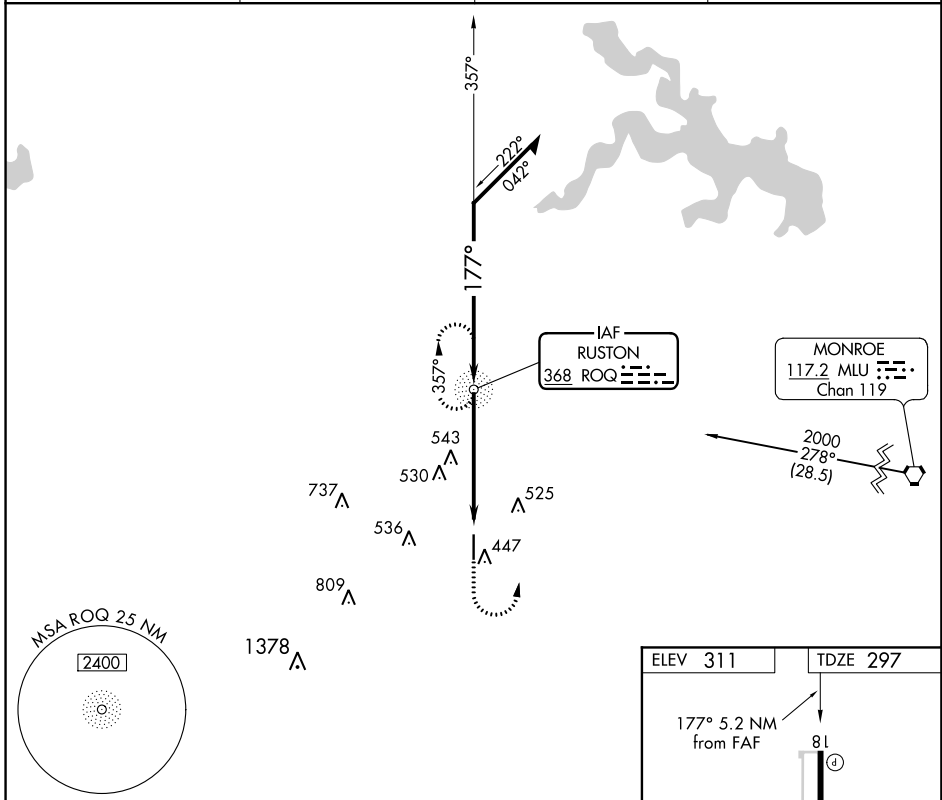
NDB RWY 18

RUSTON RGNL (RSN)

NA If local altimeter setting not received on 119.525, obtain local altimeter setting on CTAF; when not received, procedure NA. Rwy 18 helicopter visibility reduction below 3/4 SM NA.

MISSED APPROACH: Climb to 2000, then left turn direct ROQ NDB and hold.

AWOS-3PT 119.525	MONROE APP CON* 126.9 307.9	CLNC DEL 118.8	UNICOM 122.7 (CTAF)
----------------------------	---------------------------------------	--------------------------	-------------------------------



ELEV 311	TDZE 297
----------	----------

MIRL Rwy 18-36	36
REIL Rwy 18 and 36	
FAF to MAP 5.2 NM	
Knots	60 90 120 150 180
Min:Sec	5:12 3:28 2:36 2:05 1:44

CATEGORY	A		B		C		D	
S-18	900-1	603 (600-1)	900-1 3/4	603 (600-1 3/4)	900-2	603 (600-2)	900-2	603 (600-2)
CIRCLING	900-1	589 (600-1)	900-1 3/4	589 (600-1 3/4)	900-2	589 (600-2)	900-2	589 (600-2)

SC-4, 10 OCT 2019 to 07 NOV 2019

SC-4, 10 OCT 2019 to 07 NOV 2019