

WAAS CH 87121 W18A	APP CRS 177°	Rwy Idg TDZE 297 Apt Elev 311	5000
--	------------------------	---	-------------

RNAV (GPS) RWY 18

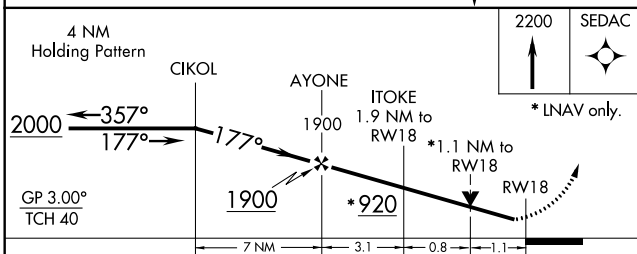
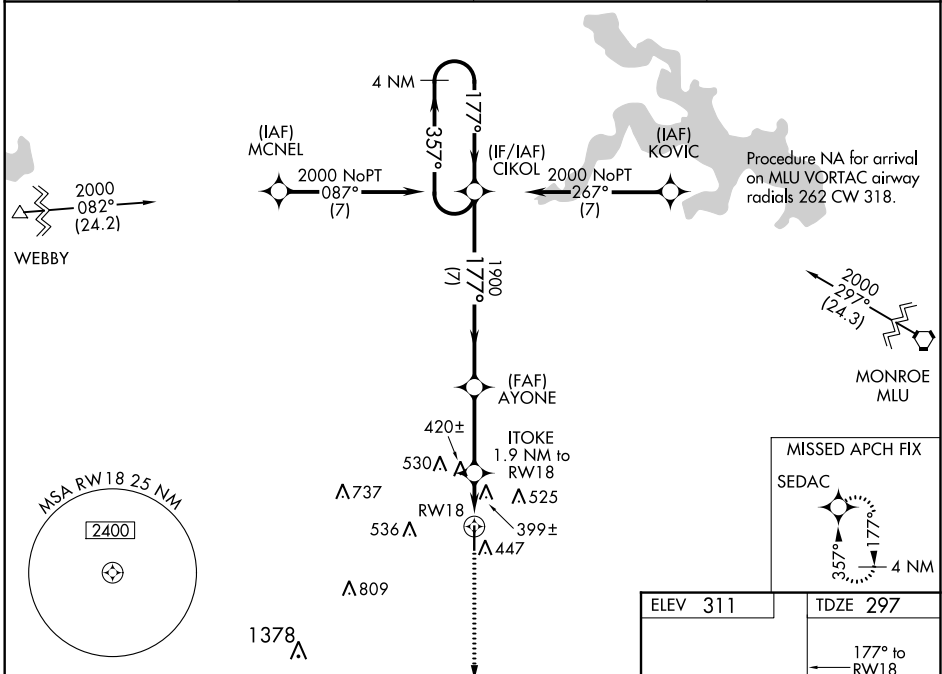
RUSTON RGNL (RSN)

RNP APCH.

⚠ Baro-VNAV NA when using Monroe altimeter setting. For uncompensated Baro-VNAV systems, LNAV/VNAV NA below -15°C (5°F) or above 42°C (107°F). Rwy 18 helicopter visibility reduction below ¾ SM NA. VDP NA with Monroe altimeter setting. When local altimeter setting not received, use Monroe altimeter setting and increase all DA 97 feet and all MDA 100 feet; increase LPV all Cats, LNAV/VNAV all Cats and LNAV Cat C and D visibility ¼ mile.

MISSED APPROACH:
Climb to 2200 direct SEDAC and hold.

AWOS-3PT 119.525	MONROE APP CON* 126.9 307.9	CLNC DEL 118.8	UNICOM 122.7 (CTAF) 0
----------------------------	---------------------------------------	--------------------------	---------------------------------



ELEV 311	TDZE 297
----------	----------

177° to RWY 18

81 (d)

5000 X 100

0.2% Up

36 (P)

MIRL Rwy 18-36 0

REIL Rws 18 and 36 0

CATEGORY	A	B	C	D
LPV DA		547-7/8	250 (300-7/8)	
LNAV/VNAV DA		723-1 1/2	426 (500-1 1/2)	
LNAV MDA	680-1	383 (400-1)	680-1 1/8	383 (400-1 1/8)
CIRCLING	760-1 449 (500-1)	780-1 469 (500-1)	780-1 1/2 469 (500-1 1/2)	880-2 569 (600-2)

SC-4, 10 OCT 2019 to 07 NOV 2019

SC-4, 10 OCT 2019 to 07 NOV 2019