

VOR/DME SJC <b>114.1</b> Chan <b>88</b>	APP CRS <b>286°</b>	Rwy Idg <b>2443</b> TDZE <b>7</b> Apt Elev <b>7</b>
---	------------------------	---

# VOR RWY 31

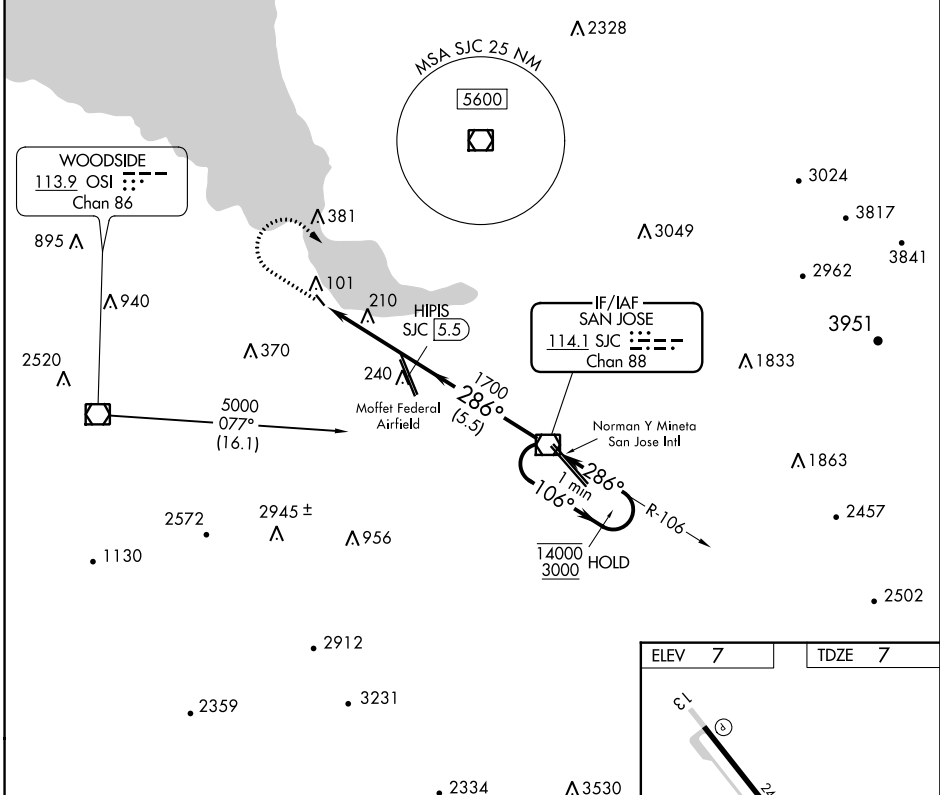
PALO ALTO (PAO)

**DME Required**

⚠ Circling NA southwest of Rwy 13-31. Rwy 31 helicopter visibility reduction below 1 SM NA. When control tower closed, use Norman Y Mineta San Jose Intl altimeter setting and increase all MDAs 40 feet. Procedure NA at night.

**MISSED APPROACH:** Climb to 1000 then climbing right turn to 3000 direct SJC VOR/DME and hold.

ATIS <b>135.275</b>	NORCAL APP CON <b>121.3 270.35</b>	<b>PALO ALTO TOWER*</b> <b>118.6 (CTAF)</b>	GND CON <b>125.0</b>	UNICOM <b>122.95</b>
------------------------	---------------------------------------	--	-------------------------	-------------------------



SW-2, 10 OCT 2019 to 07 NOV 2019

SW-2, 10 OCT 2019 to 07 NOV 2019

1000	3000	SJC	
↑	↷	☐	
		SJC VOR/DME	One Minute Holding Pattern
CATEGORY	A	B	C
S-31	480-1	473 (500-1)	NA
CIRCLING	480-1	520-1	NA
	473 (500-1)	513 (600-1)	

