

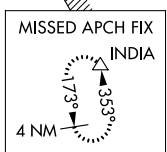
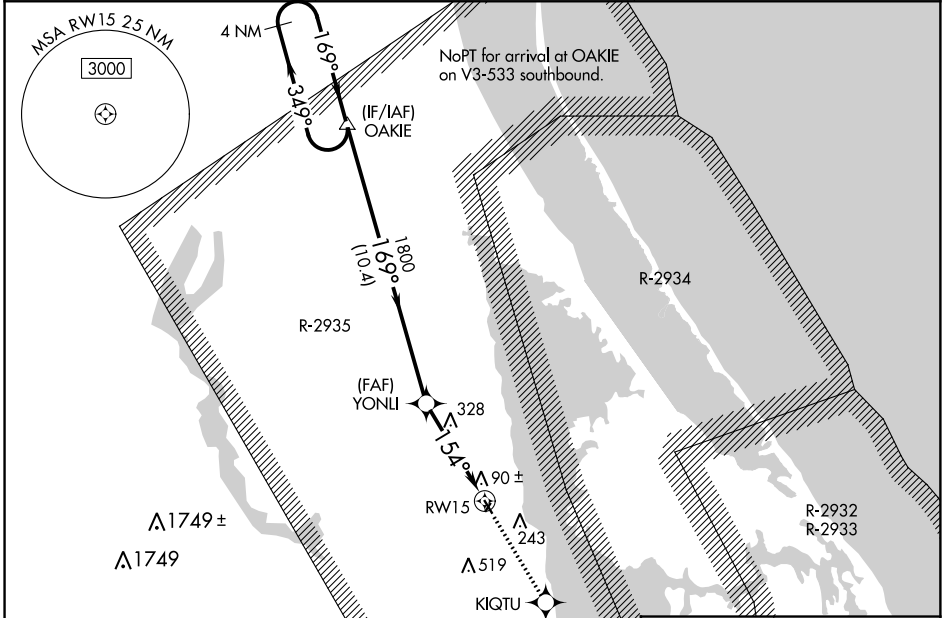
APP CRS	Rwy Idg	N/A
154°	TDZE	N/A
	Apt Elev	30

RNAV (GPS)-A

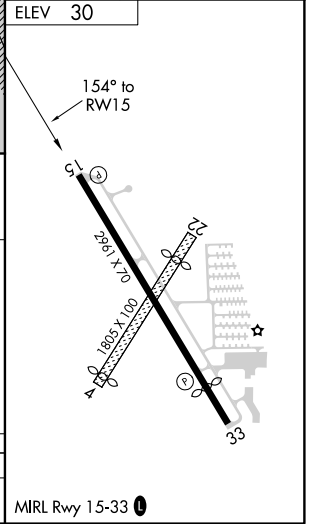
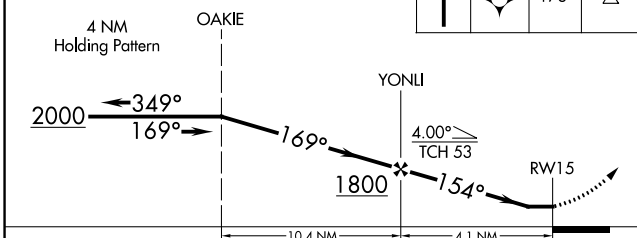
ARTHUR DUNN AIR PARK (X21)

RNP APCH.	MISSED APPROACH: Climb to 2000 direct KIQTU and on track 173° to INDIA and hold.
▼ Rwy 15 helicopter visibility reduction below 1 SM NA. ▲ NA Procedure NA at night.	

AWOS-3 119.725	ORLANDO APP CON 134.95 281.425	UNICOM 123.0 (CTAF) 0
--------------------------	--	---------------------------------



2000	KIQTU	tr 173°	INDIA
↑	✧		△



CATEGORY	A	B	C	D
CIRCLING	580-1 550 (600-1)	680-1 650 (700-1)	880-2½ 850 (900-2½)	880-2¾ 850 (900-2¾)

MIRL Rwy 15-33 0

SE-3, 10 OCT 2019 to 07 NOV 2019

SE-3, 10 OCT 2019 to 07 NOV 2019